

— CREATES MOBILE WORKPLACES —

ECO by  
**SYSTEM**   
**EDSTRÖM**

An easier, even more affordable way to get  
functional racking into your van.

2020

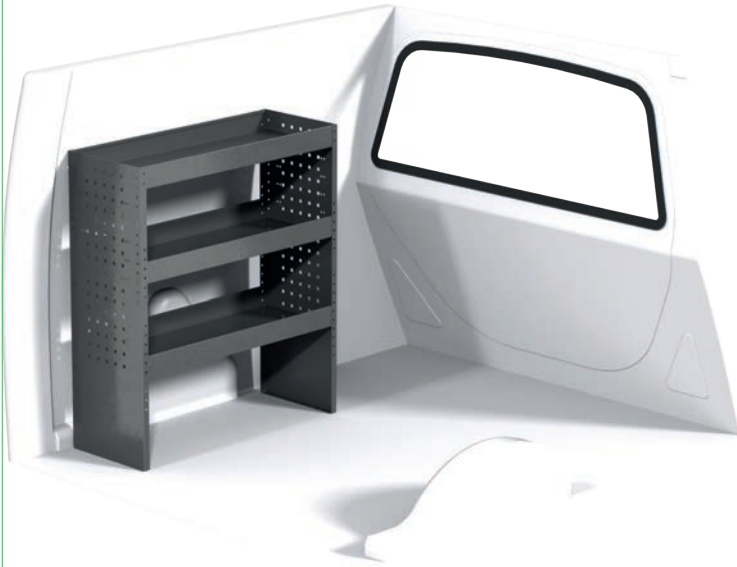




**An easier, even more affordable way to get functional racking into your van!**

System Edström presents Eco by Edstöm. An easier, even more affordable way to get functional racking into your van! The new range Eco By Edström consists of 12 preset kits, tailor made to small and medium vehicles. Choose the kit that suits you the best, ranging between simple shelves or more complete packages with drawers and portable tool cases. Mounting, installation and VAT is excluded in all prices.





## E20001

*Description:*

3 Shelves, 800 mm

*Dimensions WxDxH:*

800 x 300 x 890 mm

*Weight:*

12 kg

*Mounting:*

1,0 hour

*Payload, max:*

40 kg / shelf

**339 €**



## E20002

*Description:*

3 Shelves, 1000 mm

*Dimensions WxDxH:*

1000 x 200 x 890 mm

*Weight:*

11 kg

*Mounting:*

1,0 hour

*Payload, max:*

40 kg / shelf

**335 €**



## E20003

*Description:*

3 Legborden, 1000 mm

*Dimensions WxDxH:*

1000 x 300 x 890 mm

*Weight:*

15 kg

*Mounting:*

1,0 hour

*Payload, max:*

40 kg / shelf

**375 €**



## E20004

### Description:

- 3 Shelves, 800 mm
- 2 Shelves, 392 mm
- 3 Drawers with ball bearing

### Dimensions WxDxH:

1200 x 300 x 890 mm

### Weight:

27 kg

### Mounting:

1,5 hour

### Payload, max:

40 kg / shelf

20 kg / drawer

**575 €**



## E20005

### Description:

- 3 Shelves, 800 mm
- 2 Shelves, 392 mm
- 3 Tool cases

### Dimensions WxDxH:

1200 x 300 x 890 mm

### Weight:

26 kg

### Mounting:

1,5 hour

### Payload, max:

40 kg / shelf

15 kg / tool case

**699 €**



## E20006

### Description:

- 3 Shelves, 1000 mm
- 2 Shelves 392 mm
- 3 Drawers with ball bearing

### Dimensions WxDxH:

1400 x 300 x 890 mm

### Weight:

30 kg

### Mounting:

1,5 hour

### Payload, max:

40 kg / shelf

20 kg / drawer

**599 €**



## E20007

### Description:

- 3 Shelves, 1000 mm
- 2 Shelves, 392 mm
- 3 Tool cases

### Dimensions WxDxH:

1400 x 300 x 890 mm

### Weight:

31 kg

### Mounting:

1,5 hour

### Payload, max:

40 kg / shelf  
15 kg / tool case

**720 €**



## E20008

### Description:

- 6 Shelves, 800 mm

### Dimensions WxDxH:

1600 x 300 x 890 mm

### Weight:

28 kg

### Mounting:

2,0 hour

### Payload, max:

40 kg / shelf

**645 €**



## E20009

### Description:

- 6 Shelves, 1000 mm

### Dimensions WxDxH:

2000 x 300 x 890 mm

### Weight:

29 kg

### Mounting:

2,0 hour

### Payload, max:

40 kg / shelf

**665 €**



## E20010

### Description:

- 3 Shelves, 1000 mm
- 3 Shelves, 600 mm
- 2 Shelves, 392 mm
- 3 Drawers with ball bearing

### Dimensions WxDxH:

2000 x 300 x 890 mm

### Weight:

38 kg

### Mounting:

2,5 hour

### Payload, max:

40 kg / shelf

20 kg / drawer

**850 €**



## E20011

### Description:

- 3 Shelves, 1000 mm
- 3 Shelves, 600 mm
- 2 Shelves, 392 mm
- 3 Tool cases

### Dimensions WxDxH:

2000 x 300 x 890 mm

### Weight:

38 kg

### Mounting:

2,5 hour

### Payload, max:

40 kg / shelf

15 kg / tool case

**980 €**



## E20012

### Description:

- 3 Shelves, 1000 mm
- 3 Shelves, 800 mm

### Dimensions WxDxH:

1800 x 300 x 890 mm

### Weight:

23 kg

### Mounting:

1,5 hour

### Payload, max:

40 kg / shelf

**650 €**

### Plastic bins



Depth	Width	Height	Kg	Part.No	€
300	145	154	0,4	3050	8,55
300	235	154	0,5	3052	11,25

### Drawer inserts



Depth	Width	Height	Kg	Part.No	€
300	127	70	0,2	3001	8,15
300	172	70	0,3	3003	11,20

Drawer inserts, complete with dividers.

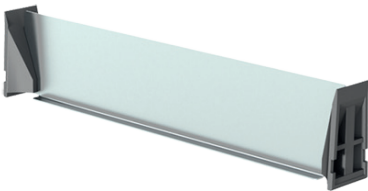
### Rubber mat



Depth	Kg	Part.No	€
298	0,4	6699	8,15

Our rubber mat is 1 mm thick and has a plain surface.

### Shelf dividers



Depth	Height	Information	Kg	Part.No	€
-	110	Brackets, per pair	-	2753	2,75
300	110		0,2	2754	4,10

### Clothes hook



Depth	Width	Height	Kg	Part.No	€
31	295	40	0,3	2706	11,20

We call it a clothes hook but, needless to say, you can use it to hang up whatever you want on it.

### Tube holder



Depth	Width	Height	Kg	Part.No	€
66	194	123	0,4	4349	24,95

### Universal hook



Depth	Width	Height	Kg	Part.No	€
85	80	100	0,2	4356	11,45

Simplicity at its best, heavy duty hooks, to be mount on a pegboard or hang it on the edge of a shelf.

### Pegboard tray



Depth	Width	Height	Kg	Part.No	€
82	200	80	0,5	4360	26,10
82	285	102	0,8	4362	31,55

A couple of trays that solve (almost) all storage problems.



**ECO** by  
**SYSTEM**   
**EDSTRÖM**

More information available on our website:  
[www.ecobyedstrom.com](http://www.ecobyedstrom.com)

Order your kit directly on our net shop:  
[www.systemedstrom.com/netshop](http://www.systemedstrom.com/netshop)

Contact your nearest System Edström dealer:  
[www.systemedstrom.com/dealers](http://www.systemedstrom.com/dealers)

**System Edström Bilinredningar AB**  
+46 (0)8 590 920 20  
info@edstrom.se  
[www.systemedstrom.com](http://www.systemedstrom.com)