

— CREATES MOBILE WORKPLACES —

FIAT

Doblò, Talento & Ducato

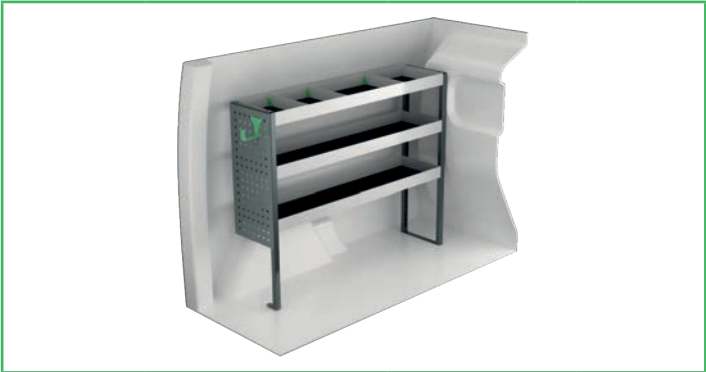


SYSTEM 
EDSTRÖM

FIAT DOBLÒ

Recommended retail prices valid from 2020-04-01 until further notice. Mounting and VAT is excluded. Suggested hours is the recommended mounting time for experienced retailers.

On electric and hybrid vans we recommend mounting by an experienced installer. Batteries and cable harnesses for approximately 400 volt must be taken in consideration. Cost of a floor may be added.



Art.No	LxDxH	Kg	Hr.	€
F40600	1241x300x1000mm	22	2,2	511,25



Art.No	LxDxH	Kg	Hr.	€
F40601	805x300x1000 mm	35	2,9	790,30



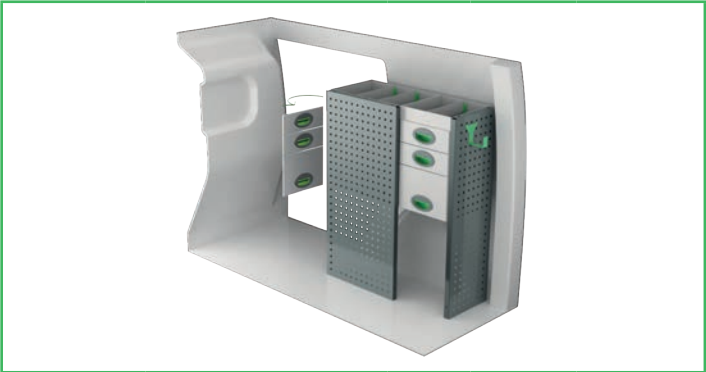
Art.No	LxDxH	Kg	Hr.	€
F40602	1241x300x1000 mm	35	2,9	765,40



Art.No	LxDxH	Kg	Hr.	€
F40603	805x300x1000 mm	39	3,2	948,90



Art.No	LxDxH	Kg	Hr.	€
F40604	1241x300x1000 mm	34	2,9	793,70



Art.No	LxDxH	Kg	Hr.	€
F40605	805x300x1000 mm	43	2,6	934,55



Art.No	Height	Kg	Hr.	€
F40610	360 mm	84	6,6	1 711,10



Art.No	Height	Kg	Hr.	€
F40614	190 mm	70	6,4	1 473,60

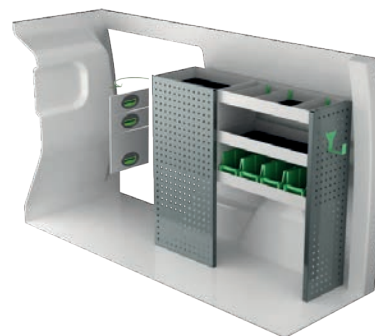
FIAT DOBLÒ MAXI

Recommended retail prices valid from 2020-04-01 until further notice. Mounting and VAT is excluded.
Suggested hours is the recommended mounting time for experienced retailers.

On electric and hybrid vans we recommend mounting by an experienced installer. Batteries and cable harnesses for approximately 400 volt must be taken in consideration. Cost of a floor may be added.



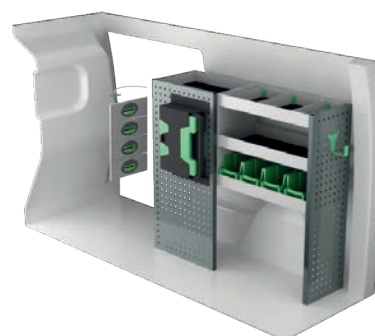
Art.No	LxDxH	Kg	Hr.	€
F40620	1633x300x1000 mm	26	2,2	604,85



Art.No	LxDxH	Kg	Hr.	€
F40621	1108x300x1000 mm	38	2,9	830,05



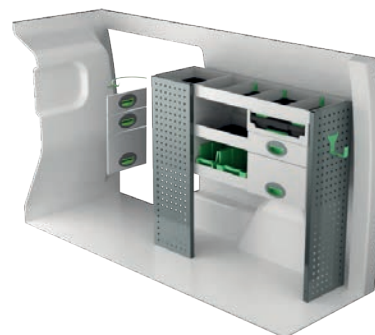
Art.No	LxDxH	Kg	Hr.	€
F40622	1633x300x1000 mm	40	2,9	886,05



Art.No	LxDxH	Kg	Hr.	€
F40623	1108x300x1000 mm	42	3,2	988,65



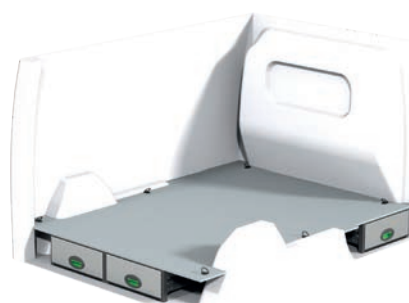
Art.No	LxDxH	Kg	Hr.	€
F40624	1601x300x1000 mm	56	3,6	1 240,80



Art.No	LxDxH	Kg	Hr.	€
F40625	1117x300x1000 mm	42	3,5	1 151,20



Art.No	Height	Kg	Hr.	€
F40630	360 mm	91	6,6	1 822,95



Art.No	Height	Kg	Hr.	€
F40634	190 mm	76	6,4	1 563,10

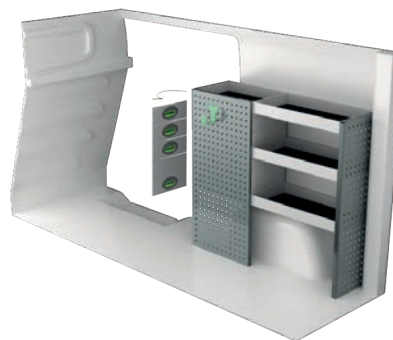
FIAT TALENTO L1H1

Recommended retail prices valid from 2020-04-01 until further notice. Mounting and VAT is excluded.
Suggested hours is the recommended mounting time for experienced retailers.

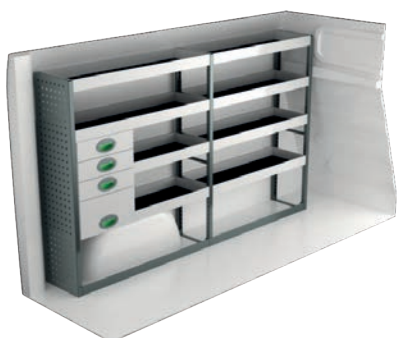
On electric and hybrid vans we recommend mounting by an experienced installer. Batteries and cable harnesses for approximately 400 volt must be taken in consideration. Cost of a floor may be added.



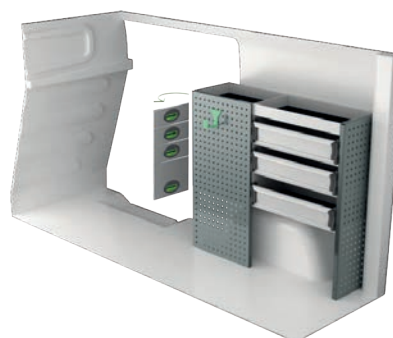
Art.No	LxDxH	Kg	Hr.	€
F40840	1998x300x1000 mm	33	2,9	712,55



Art.No	LxDxH	Kg	Hr.	€
F40841	1107x300x1000 mm	42	3,1	853,65



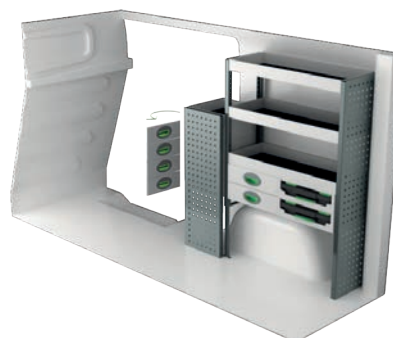
Art.No	LxDxH	Kg	Hr.	€
F40842	1998x300x1220 mm	60	4,4	1 233,15



Art.No	LxDxH	Kg	Hr.	€
F40843	1107x300x1000 mm	47	5,0	1 014,20



Art.No	LxDxH	Kg	Hr.	€
F40844	1998x300x1000 mm	51	4,0	1 081,80



Art.No	LxDxH	Kg	Hr.	€
F40845	1147x300x1220 mm	51	5,0	1 419,50



Art.No	LxDxH	Kg	Hr.	€
F40846	1964x300x1220 mm	77	4,4	1 876,90

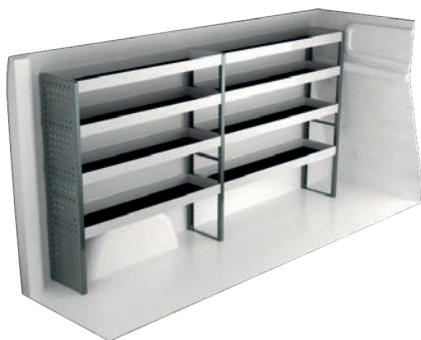


Art.No	Height	Kg	Hr.	€
F40847	1061x470x1185 mm	38	3,0	788,40

FIAT TALENTO L2H1

Recommended retail prices valid from 2020-04-01 until further notice. Mounting and VAT is excluded.
Suggested hours is the recommended mounting time for experienced retailers.

On electric and hybrid vans we recommend mounting by an experienced installer. Batteries and cable harnesses for approximately 400 volt must be taken in consideration. Cost of a floor may be added.



Art.No	LxDxH	Kg	Hr.	€
F40860	2356x300x1220 mm	47	3,1	993,90



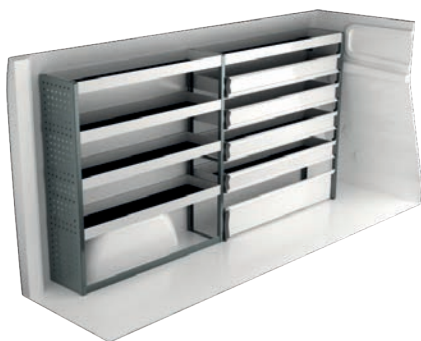
Art.No	LxDxH	Kg	Hr.	€
F40861	1530x300x1220 mm	62	3,3	1 199,55



Art.No	LxDxH	Kg	Hr.	€
F40862	2356x300x1000 mm	55	4,5	1 295,75



Art.No	LxDxH	Kg	Hr.	€
F40863	1500x300x1000 mm	62	5,0	1 206,80



Art.No	LxDxH	Kg	Hr.	€
F40864	2356x300x1220 mm	65	4,3	1 322,55



Art.No	LxDxH	Kg	Hr.	€
F40865	1500x300x1000mm	81	5,5	1 741,85



Art.No	LxDxH	Kg	Hr.	€
F40866	2356x300x1000 mm	77	4,5	1 854,05

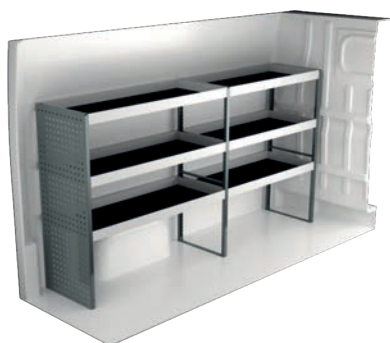


Art.No	LxDxH	Kg	Hr.	€
F40867	1453x470x1185 mm	45	3,0	888,20

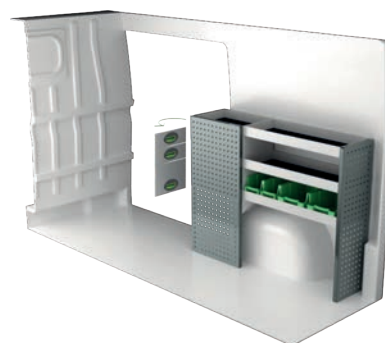
FIAT DUCATO L1H1

Recommended retail prices valid from 2020-04-01 until further notice. Mounting and VAT is excluded. Suggested hours is the recommended mounting time for experienced retailers.

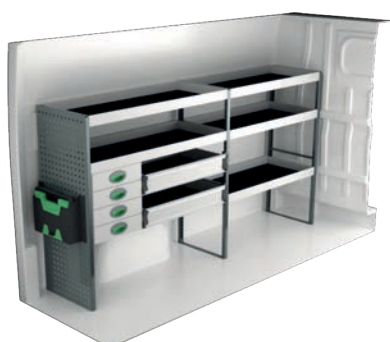
On electric and hybrid vans we recommend mounting by an experienced installer. Batteries and cable harnesses for approximately 400 volt must be taken in consideration. Cost of a floor may be added.



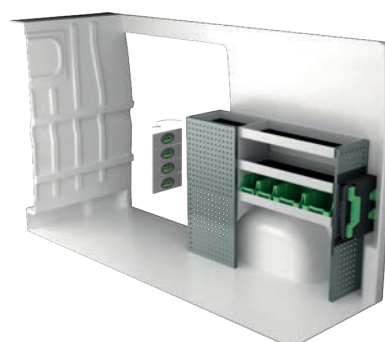
Art.No	LxDxH	Kg	Hr.	€
F45020	2270x470x1220 mm	52	2,5	901,55



Art.No	LxDxH	Kg	Hr.	€
F45021	1287x300x1000 mm	39	2,9	829,70



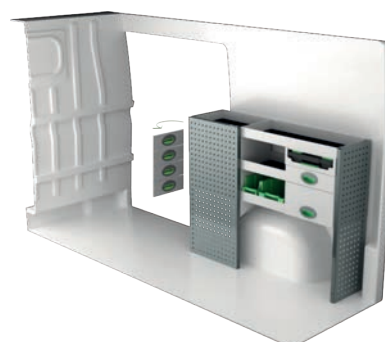
Art.No	LxDxH	Kg	Hr.	€
F45022	2355x470x1220 mm	79	3,9	1 499,70



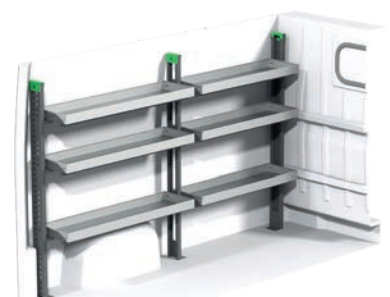
Art.No	LxDxH	Kg	Hr.	€
F45023	1372x300x1000 mm	43	3,2	988,30



Art.No	LxDxH	Kg	Hr.	€
F45024	2270x300x1515 mm	83	5,2	2 070,36



Art.No	LxDxH	Kg	Hr.	€
F45025	1287x300x1000 mm	51	3,5	1 215,85



Art.No	LxDxH	Kg	Hr.	€
F45026	2358x300x1788 mm	65	4,8	1 869,70



Art.No	LxDxH	Kg	Hr.	€
F45027	1284x300x1788 mm	38	2,4	1 064,55

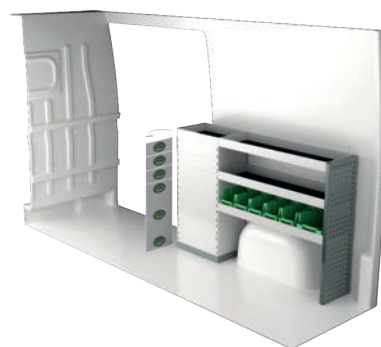
FIAT DUCATO L2H2

Recommended retail prices valid from 2020-04-01 until further notice. Mounting and VAT is excluded.
Suggested hours is the recommended mounting time for experienced retailers.

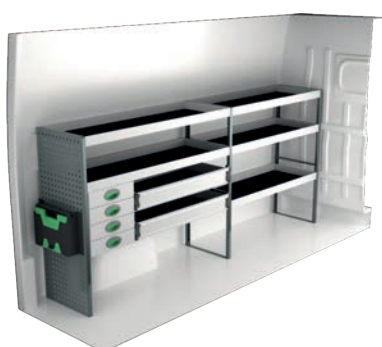
On electric and hybrid vans we recommend mounting by an experienced installer. Batteries and cable harnesses for approximately 400 volt must be taken in consideration. Cost of a floor may be added.



Art.No	LxDxH	Kg	Hr.	€
F45040	2662x470x1220 mm	57	2,5	986,45



Art.No	LxDxH	Kg	Hr.	€
F45041	1500x300x1000 mm	52	2,8	1 063,15



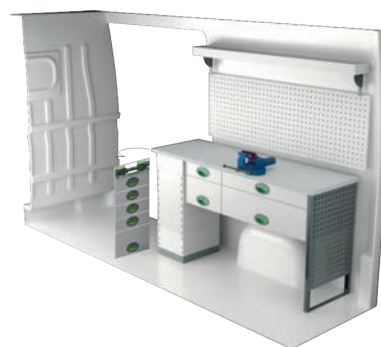
Art.No	LxDxH	Kg	Hr.	€
F45042	2747x470x1220 mm	86	3,9	1 602,25



Art.No	LxDxH	Kg	Hr.	€
F45043	1532x300x1220 mm	68	3,7	1 496,20



Art.No	LxDxH	Kg	Hr.	€
F45044	2662x300x1735 mm	102	5,8	2 464,57



Art.No	LxDxH	Kg	Hr.	€
F45045	1509x470x855 mm	102	3,9	2 414,89



Art.No	LxDxH	Kg	Hr.	€
F45046	2750x470x1788 mm	79	4,8	2 072,95

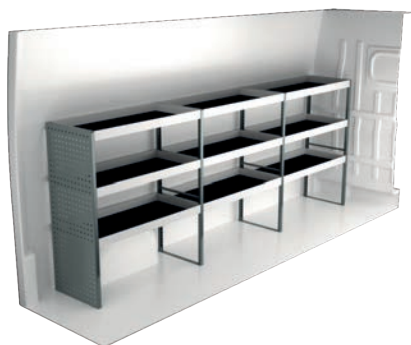


Art.No	LxDxH	Kg	Hr.	€
F45047	1497x470x1788 mm	45	2,4	1 143,35

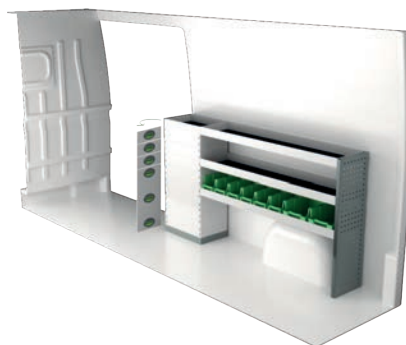
FIAT DUCATO L3H2

Recommended retail prices valid from 2020-04-01 until further notice. Mounting and VAT is excluded. Suggested hours is the recommended mounting time for experienced retailers.

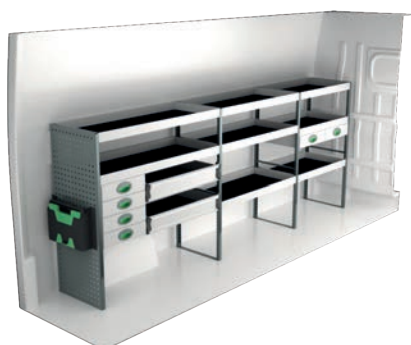
On electric and hybrid vans we recommend mounting by an experienced installer. Batteries and cable harnesses for approximately 400 volt must be taken in consideration. Cost of a floor may be added.



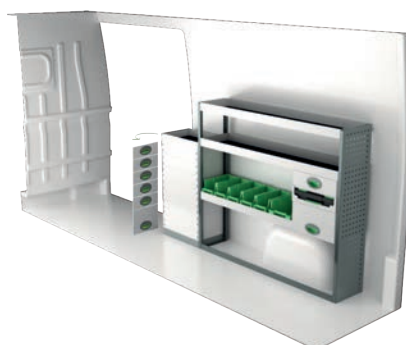
Art.No	LxDxH	Kg	Hr.	€
F45060	3120x470x1220 mm	70	3,4	1 217,30



Art.No	LxDxH	Kg	Hr.	€
F45061	1892x300x1000 mm	56	2,8	1 171,60



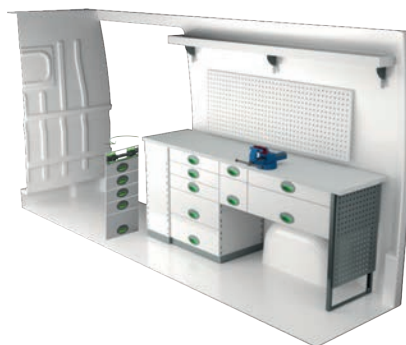
Art.No	LxDxH	Kg	Hr.	€
F45062	3086x470x1220 mm	107	5,2	2 004,40



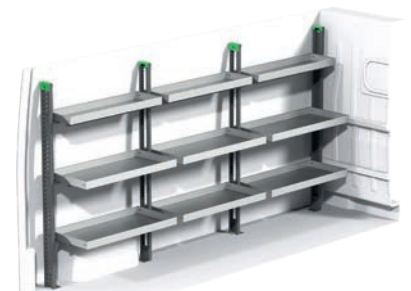
Art.No	LxDxH	Kg	Hr.	€
F45063	1924x300x1220 mm	71	3,5	1 563,15



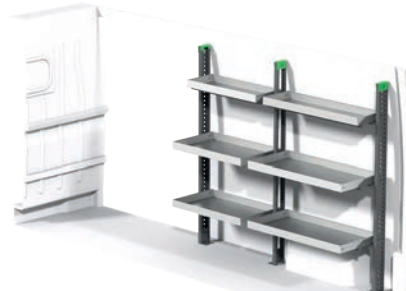
Art.No	LxDxH	Kg	Hr.	€
F45064	3265x300x1735 mm	143	8,5	3 374,66



Art.No	LxDxH	Kg	Hr.	€
F45065	2024x470x855 mm	144	4,4	3 120,72



Art.No	LxDxH	Kg	Hr.	€
F45066	3253x470x1788 mm	98	7,3	2 665,10

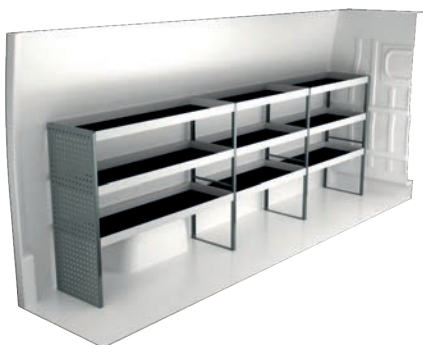


Art.No	LxDxH	Kg	Hr.	€
F45067	1966x470x1788 mm	64	4,8	1 764,15

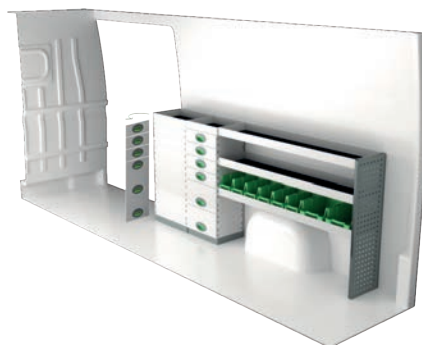
FIAT DUCATO L4H2

Recommended retail prices valid from 2020-04-01 until further notice. Mounting and VAT is excluded.
Suggested hours is the recommended mounting time for experienced retailers.

On electric and hybrid vans we recommend mounting by an experienced installer. Batteries and cable harnesses for approximately 400 volt must be taken in consideration. Cost of a floor may be added.



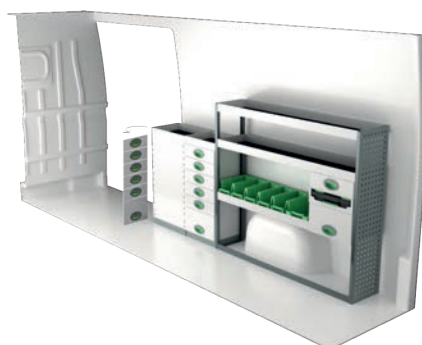
Art.No	LxDxH	Kg	Hr.	€
F45080	3512x470x1220 mm	75	3,4	1 302,20



Art.No	LxDxH	Kg	Hr.	€
F45081	2284x300x1000 mm	85	4,1	1 788,30



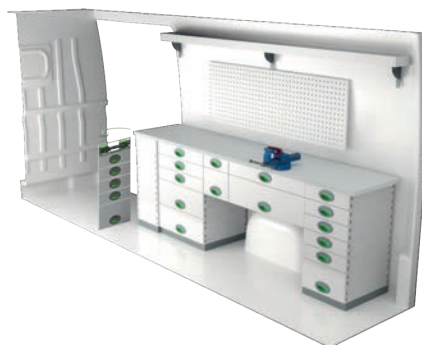
Art.No	LxDxH	Kg	Hr.	€
F45082	3597x470x1220 mm	129	5,5	2 359,65



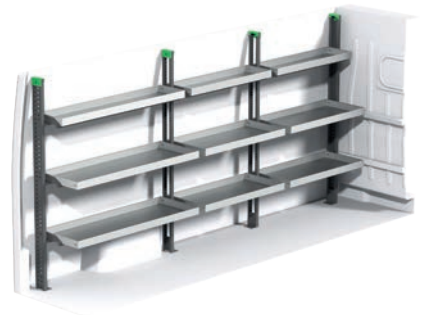
Art.No	LxDxH	Kg	Hr.	€
F45083	2316x300x1220 mm	98	4,8	2 159,60



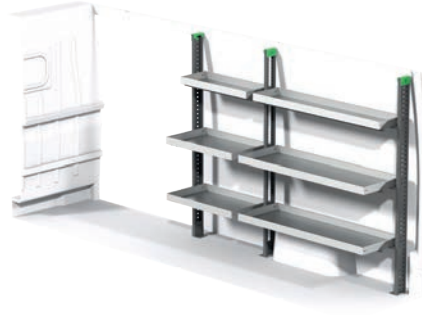
Art.No	LxDxH	Kg	Hr.	€
F45084	3512x300x1735 mm	152	8,6	3 555,83



Art.No	LxDxH	Kg	Hr.	€
F45085	2383x470x855 mm	186	4,8	3 783,93



Art.No	LxDxH	Kg	Hr.	€
F45086	3645x470x1788 mm	83	7,3	2 813,65



Art.No	LxDxH	Kg	Hr.	€
F45087	2358x470x1788 mm	71	4,8	1 912,70

INFORMATION



GENERALLY

The kits include what you see in the drawing as well as installation parts, rubber mats to all shelves and foam to the drawers.

System Edström Bilinredningar AB is certified according to SS-EN ISO 9001:2015 to secure the administrative quality and to give us the possibility to keep a high accuracy on deliveries.

All material used in System Edström can be recycled to 100%. We are also certified according to SS-EN ISO 14001:2015.



REMEMBER

Now that you have chosen to have System Edström in your vehicle you have taken the first and most important step to make your mobile workshop safe and functional. From here on it is up to you how safe and functional your working place will be.

You as the driver has the full responsibility if you or any one else is injured if the cargo is poorly secured. It is also your responsibility to make sure that the interior is mounted in the safest way possible whatever your choice of workshop, even if they are professionals with knowhow and long experience.

Make sure NOT to exceed the maximum payload of the vehicle.



SECURITY

Our products are tested in two ways, the first and most important is two crashtests, one (ECE 17:07) performed by Milbrook in England and another one performed by Valutec in France (INRS NS286).

Learn more about us on our homepage, www.systemedstrom.com.



Vice

Depth	Width	Height	Kg	Part.No	€
360	135	140	10,3	5004	377,15

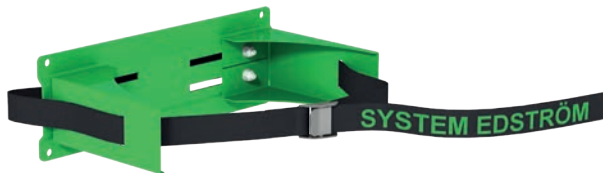
The forged vice is complete with pipe jaw and turning plate. Max opening 140 mm.



Vice Holders

Depth	Width	Height	Kg	Part.No	€
1110	210	195	9,4	5012	231,75
1110	210	80	8,9	5013	226,90

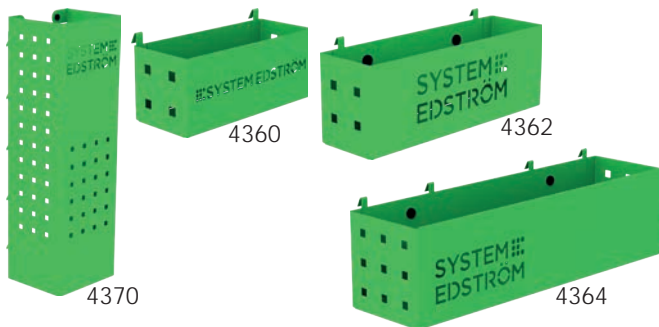
Plate measurement 180x210 mm. Cover 2950 is included.



Gas bottle holder adjustable

Depth	Width	Height	Tube Ø	Kg	Part.No	€
150	300	97	< 300	0,9	2910	78,55

Liquefied petroleum gas P6 (bottles with 320 mm Ø can be stored after modification).



Pegboard tray

Depth	Width	Height	Kg	Part.No	€
82	200	80	0,5	4360	26,10
82	285	102	0,8	4362	31,55
122	455	122	1,5	4364	42,45
153	179	575	3,0	4370	65,20

A number of different trays that solve (almost) all storage problems.



Internal ladder holder

Length	Kg	Part.No	€
2400	3,9	T8900	227,45

Store your ladder on the inside of the roof, pull it back to the rear door in a simple operation. The aluminum rail comes in two parts with a joining piece.



Hose/Cable rack

Depth	Width	Height	Kg	Part.No	€
79	267	168	0,5	4077	26,95

Tube holder

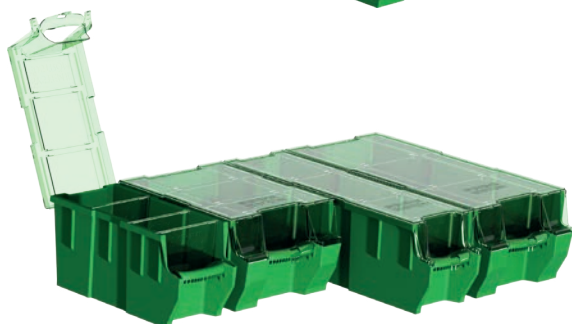
66	194	123	0,4	4349	24,95
----	-----	-----	-----	------	-------



Universal hook

Depth	Width	Height	Kg	Part.No	€
85	80	100	0,2	4356	11,45
61	83	55	0,1	4357	9,90

Simplicity at its best, heavy duty hooks, to be mount on a pegboard or hang it on the edge of a shelf.



Plastic bin for shelves

Depth	Width	Height	Kg	Part.No	€
300	145	154	0,4	3050	8,55
300	235	154	0,5	3052	11,25
470	145	154	0,5	3055	11,65
470	235	154	0,5	3057	14,35

Transparant lid for plastic bins

Depth	Width	Fits	Kg	Part.No	€
300	150	3050	0,2	3060	5,20
300	240	3052	0,2	3062	8,30
470	150	3055	0,2	3065	8,75
470	240	3057	0,4	3067	13,00

Dividers for plastic bins

Width	Height	Fits	Part.No	€
140	154	3050, 55	3070	2,40
230	154	3052, 57	3072	2,70

Bracket for dropfront shelves

Depth	Kg	Part.No	€
300	0,1	3081	4,60
470	0,2	3082	5,20



Clothes hook

Depth	Width	Height	Kg	Part.No	€
31	295	40	0,3	2706	11,20
31	465	40	0,5	2708	15,80

We call it a clothes hook but, needless to say, you can use it to hang up whatever you want on it.

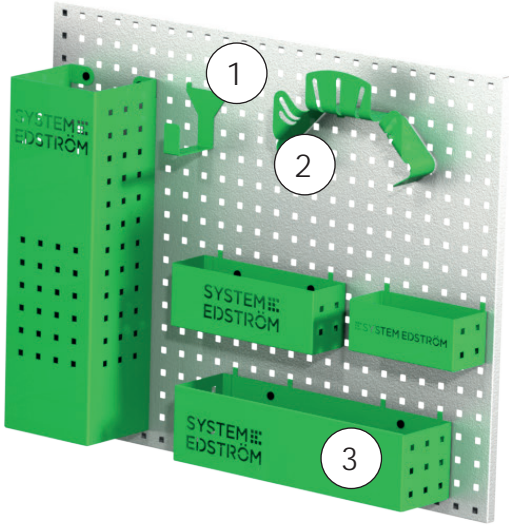
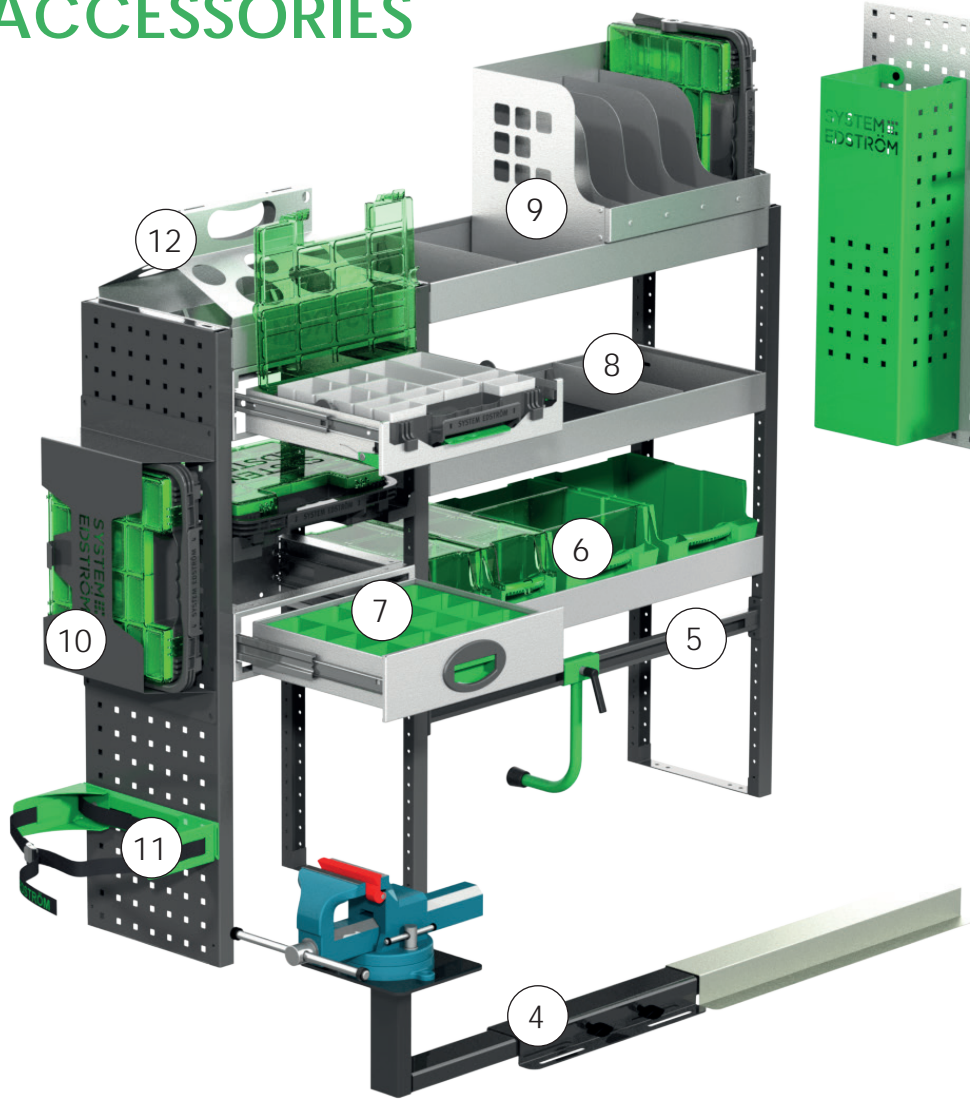


Strap with brackets

Information	Width	Part.No	€
1200 mm, nylon strap	25	4365	20,70
1000 mm, elastic strap	25	4366	22,30

The brackets will fit on our pegboards.

ACCESSORIES



Pos.	Description
1	Universal hook
2	Cable/Hose rack
3	Pegboard basket
4	Vice and holders
5	Case support
6	Plastic bins
7	Drawer inserts
8	Shelf dividers
9	Tool case/File holder
10	Tool case
11	Gas bottle holders
12	Can/Tube holder

Accessory package No. 1		Accessory package No. 2		Security package	
Art.No	€	Art.No	€	Art.No	€
F11001	78,42	F11002	161,09	F11003	292,45
Pegboard not included.		Pegboard not included.			

For more products: www.systemedstrom.com
Prices are recommended list prices, unmounted, excluding VAT.
Freight and cargo carrier may be added.
We apply sales terms according to LCV14.



Up to 5 years
warranty



Crash tested



Made in Swe-
den

**SYSTEM
EDSTRÖM**

SYSTEM EDSTRÖM BILINREDNINGAR AB
Raseborgsgatan 11
164 74 Kista
Sweden

CONTACT
Order +46 (0)10 102 95 00
Sales +46 (0)10 102 95 01
Switchboard +46 (0)8 590 920 20
info@edstrom.se