

— CREATES MOBILE WORKPLACES —

PROFESSIONAL Van Racking



SYSTEM
EDSTRÖM



CREATES MOBILE WORKPLACES

More products: www.systemedstrom.com

Prices quoted are recommended list prices excluding VAT and installation. Delivery costs will also apply. Local variations may apply, please check your specific market. We apply sales terms according to LCV14.



SIMPLICITY

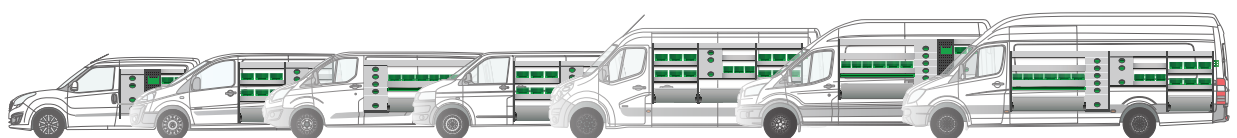
CRASH TESTED

MADE IN SWEDEN

UP TO 5 YEARS WARRANTY

GREATER VALUE FOR MONEY

MORE THAN 60 YEARS OF EXPERIENCE





2005 & 2007

Shelf frames

Depth	Width	Height	Kg	Part.No	€
300	31	505	1,6	2000	54,10
300	31	670	2,0	2002	54,90
300	31	890	2,5	2004	58,25
300	31	505/890	2,2	2005	66,55
300	31	1000	2,8	2006	59,30
300	31	670/1000	3,1	2007	67,60
300	31	1220	3,5	2008	61,15
300	31	1440	4,3	2010	64,70
470	31	505	1,9	2012	58,20
470	31	670	2,3	2014	60,30
470	31	825	2,6	2016	61,15
470	31	890	2,8	2018	63,45
470	31	1000	3,0	2020	63,60
470	31	1220	3,9	2022	64,70
470	31	1440	4,7	2024	68,50

Shelf frames for false floor and sliding shelves



Depth	Width	Height	Kg	Part.No	€
300	31	360	1,4	2070	42,65
300	31	190	1,0	2071	34,85
470	31	360	1,8	2072	39,00
470	31	190	1,4	2073	36,45



Shelf frame extensions

Depth	Width	Height	Depth top	Kg	Part.No	€
300	31	185	160	1,0	2050	45,75
300	31	230	160	1,1	2052	47,85
300	31	290	160	1,2	2054	48,90
300	31	400	160	1,5	2056	52,00
470	31	185	300	1,3	2058	53,05
470	31	230	300	1,4	2060	54,10
470	31	290	300	1,6	2062	56,15
470	31	400	300	1,8	2064	60,30

Shelf frame extensions are used for fitting additional shelving to the top of a rack allowing for the curvature of the van.



Shelf frame support leg

Min.height	Max.height	Height	Kg	Part.No	€
10	400	500	0,6	2090	17,70

Shelf frame support legs can be fitted to allow for fitting at uneven parts of the van; over the wheel arch for example.

Drawer system



Drawers

Depth	Width	Height	⇒	Kg	Part.No	€
300	302	110	105%	3,4	2331	75,55
300	302	220	105%	4,8	2332	97,55
300	392	110	105%	3,8	2341	81,65
300	392	220	105%	5,4	2342	101,90
300	392	165	105%	4,6	2343	98,80
300	605	110	105%	4,9	2361	90,20
300	605	220	105%	7,2	2362	119,85
300	784	110	105%	5,7	2371	168,50
300	784	220	105%	7,2	2372	197,30
470	302	110	105%	4,7	2431	75,55
470	302	220	105%	6,5	2432	107,05
470	392	110	105%	5,2	2441	90,50
470	392	220	105%	7,2	2442	114,15
470	392	165	105%	6,3	2443	122,80
470	605	110	105%	6,4	2461	110,10
470	605	220	105%	9,1	2462	135,90
470	784	110	105%	7,8	2471	191,35
470	784	220	105%	10,9	2472	225,25

Combine our drawers to a cabinet optimized to suit you and your business.

Payload 60 kg, uniformly distributed.





Top plates

Depth	Width	Height	Kg	Part.No	€
300	302	1	0,7	2533	12,80
300	392	1	0,9	2534	14,55
300	605	1	1,5	2536	18,75
470	302	1	1,1	2543	15,25
470	392	1	1,5	2544	17,40
470	605	1	2,3	2546	21,50

Support plinths

Depth	Width	Height	Kg	Part.No	€
300	302	55	0,7	2633	20,80
300	392	55	0,8	2634	21,85
300	605	55	1,1	2636	24,95
470	302	55	0,9	2643	22,90
470	392	55	1,0	2644	24,95
470	392	120	2,0	2645	30,75
470	605	55	1,1	2646	27,45

For 784 mm wide drawers use 2 pcs of 392 mm wide support plinths.



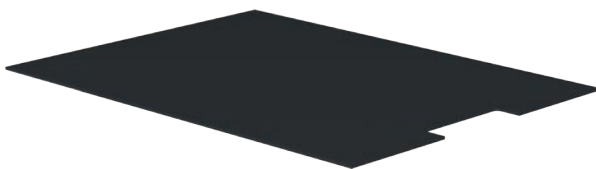
Drawer inserts

Depth	Width	Height	Kg	Part.No	€
300	127	70	0,2	3001	8,15
300	172	70	0,3	3003	11,20
470	127	70	0,4	3005	9,85
470	172	70	0,4	3007	12,80

Drawer inserts, complete with dividers.

Fitting guide

Drawer width	Inserts	Drawer width	Inserts
302 mm	127 mm, 2 pcs	605 mm	127 mm, 3 pcs + 172 mm 1 pcs
392 mm	172 mm, 2 pcs	784 mm	127 mm, 3 pcs + 172 mm, 2 pcs

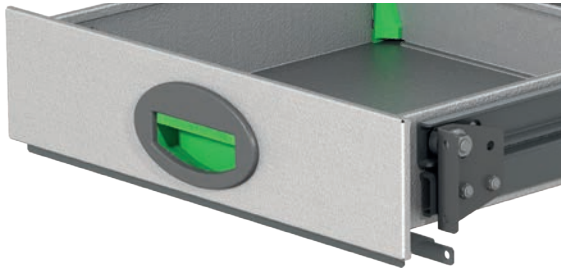


Drawer foam inserts

Fits in	Thickness	Part.No	€
2331 & 2332	3	5233	2,30
2341, 2342 & 2343	3	5234	2,40
2361 & 2362	3	5236	2,50
2371 & 2372	3	5237	4,10
2431 & 2432	3	5243	2,80
2441, 2442 & 2443	3	5244	2,85
2461 & 2462	3	5246	2,90
2471 & 2472	3	5247	4,95

Benefit from a quieter life by using lining foam in the drawers.

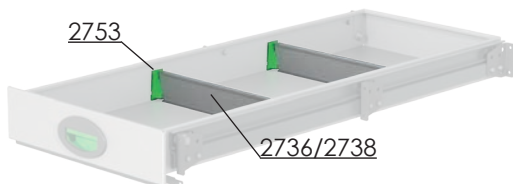




Sliding shelves

Depth	Width	Height	⇄	Kg	Part.No	€
268	826 (784)	110	70%	7,4	1881	173,70
268	826 (784)	165	70%	8,0	1897	179,30
268	1035 (997)	110	70%	8,8	1882	179,90
268	1035 (997)	165	70%	9,6	1898	186,15
268	1218 (1176)	110	70%	10,1	1883	191,35
268	1218 (1176)	165	70%	10,9	1899	192,40
438	826 (784)	110	70%	8,9	1884	182,00
438	826 (784)	165	70%	9,9	1885	192,40
438	826 (784)	360	70%	12,7	1894	217,30
438	1035 (997)	110	70%	10,6	1886	184,10
438	1035 (997)	165	70%	11,7	1887	202,80
438	1035 (997)	220	70%	13,1	1888	243,35
438	1035 (997)	360	70%	15,1	1895	260,80
438	1218 (1176)	110	70%	11,9	1889	202,80
438	1218 (1176)	165	70%	13,3	1890	218,40
438	1218 (1176)	220	70%	14,8	1891	255,85
438	1218 (1176)	360	70%	17,2	1896	289,10

Payload 80 kg, uniformly distributed.

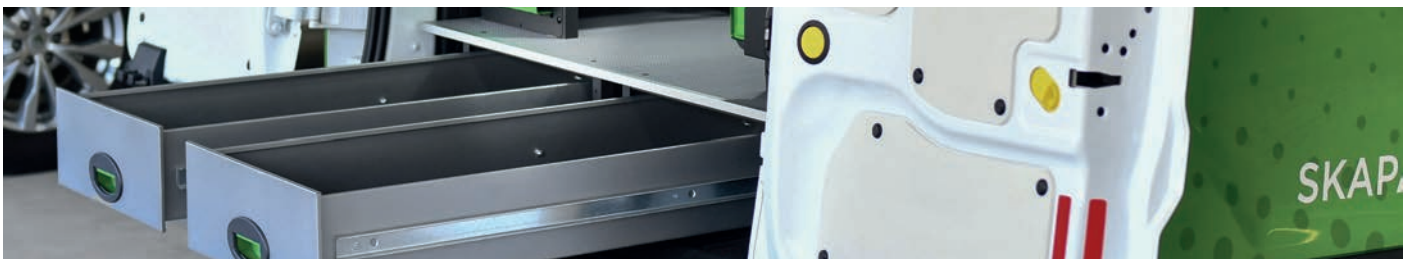


Dividers for sliding shelves

Depth	Height	Information	Kg	Part.No	€
-	-	Brackets, per pair	-	2753	2,75
436	62		0,4	2736	7,65
436	114		0,6	2738	8,75

2736 fits 1884 - 1891.

2738 is slightly higher and fits 1885, 1887, 1888, 1890 & 1891.



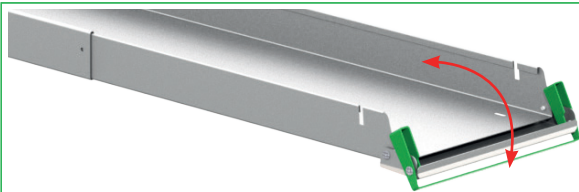
Shelves



Depth	Width	Rubber mat	Kg	Part.No	€
300	302	6600	1,4	1600	44,90
300	392	6602	1,7	1602	47,85
300	605	6604	2,5	1604	51,10
300	694	6606	2,7	1606	55,45
300	784	6608	3,0	1608	59,30
300	907	6610	3,5	1610	62,40
300	997	6612	3,7	1612	69,30
300	1086	6614	4,0	1614	81,00
300	1176	6616	4,3	1616	85,05
300	1210	6618	4,4	1618	88,40
300	1299	6620	4,8	1620	94,65
300	1389	6622	5,0	1622	97,25
300	1512	6624	5,4	1624	107,10
300	1568	6626	5,6	1626	114,40
300	1960	6632	9,5	1632	132,60
400	605	6554	2,9	1504	58,00
400	784	6558	3,6	1508	63,45
400	997	6562	4,4	1512	78,50
400	1176	6566	5,1	1516	89,95
470	302	6700	2,0	1700	53,05
470	392	6702	2,4	1702	57,10
470	605	6704	3,4	1704	61,35
470	694	6706	3,8	1706	64,50
470	784	6708	4,2	1708	68,65
470	907	6710	4,8	1710	77,50
470	997	6712	5,2	1712	81,00
470	1086	6714	5,6	1714	87,25
470	1176	6716	6,1	1716	93,60
470	1210	6718	6,1	1718	99,85
470	1299	6720	6,5	1720	101,90
470	1389	6722	6,9	1722	106,10
470	1512	6724	7,5	1724	118,55
470	1568	6726	8,0	1726	122,70
470	1960	6730	13,0	1730	143,50
160	784	6800	1,5	1800	69,00
160	997	6802	2,5	1802	83,20
160	1176	6804	2,9	1804	97,55
160	1389	6805	2,6	1805	101,00
160	1568	6806	3,8	1806	107,90
160	1160-2120	6803	5,5	1810	138,05

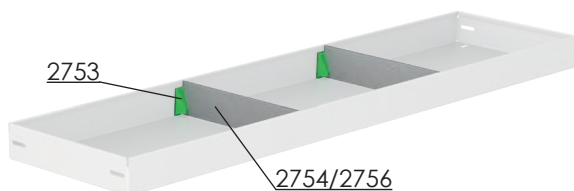
Payload, uniformly distributed load:
Shelf width 300 - 1600 mm 70 kg.
Shelf width 1601 - 1960 mm 50 kg.
Adjustable shelves 30 kg.

Height 65 mm. 400 mm deep shelves should be mounted in 300 mm deep shelf frames.



Adjustable shelves with flipfront

Depth	Width	Rubber mat	Kg	Part.No	€
160	1830-3460	6807	9,3	1813	175,75
300	1830-3460	6640	13,5	1815	186,15



Shelf dividers

Depth	Height	Information	Kg	Part.No	€
-	110	Brackets, per pair	-	2753	2,75
300	110		0,2	2754	4,10
470	110		0,2	2756	4,95

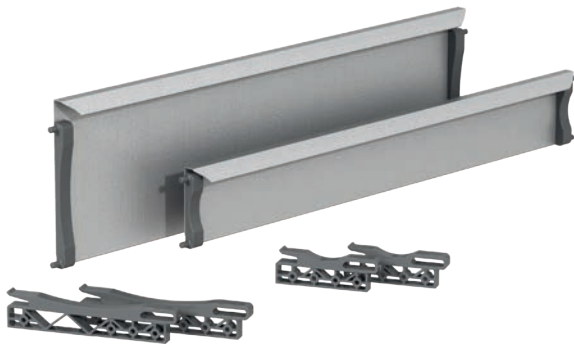


Dropfront shelves

Depth	Width	Rubber mat	Kg	Part.No	€
300	605	6604	2,6	3604	43,70
300	784	6608	3,2	3608	46,80
300	907	6610	3,5	3610	52,00
300	997	6612	4,0	3612	56,70
300	1176	6616	4,5	3616	72,80
470	605	6704	3,7	3704	53,05
470	784	6708	4,5	3708	56,15
470	907	6710	5,0	3710	67,10
470	997	6712	5,5	3712	70,20
470	1176	6716	6,3	3716	78,00

Height 90 + 27 mm.

Payload 70 kg uniformly distributed load.



Drop fronts

Depth	Width	Height	Kg	Part.No	€
38	605	110	0,9	3804	42,70
38	605	220	1,5	3805	45,40
38	784	110	1,2	3808	44,30
38	784	220	1,9	3809	50,00
38	907	110	1,3	3810	44,90
38	907	220	2,0	3811	51,90
38	997	110	1,4	3812	45,40
38	997	220	2,3	3813	53,55
38	1176	110	1,7	3816	47,85
38	1176	220	2,7	3817	56,00
38	1389	220	2,8	3823	66,05
38	1568	220	3,1	3827	69,45

Supplied with fixing brackets.



Dividers for dropfront Shelves

Depth	Height	Kg	Part.No	€
300	110	0,3	1990	7,05
300	220	0,5	1992	9,90
470	110	0,4	1994	10,60
470	220	0,8	1996	10,90



Shelf for cable reels

Depth	Width	Height	Kg	Part.No	€
300	784	114	3,0	1688	70,20
300	Extra divider	100	0,2	1689	9,25

One movable divider is included. Payload 30 kg uniformly distributed load.





Plastic bin for shelves

Depth	Width	Height	Kg	Part.No	€
300	145	154	0,4	3050	8,55
300	235	154	0,5	3052	11,25
470	145	154	0,5	3055	11,65
470	235	154	0,5	3057	14,35



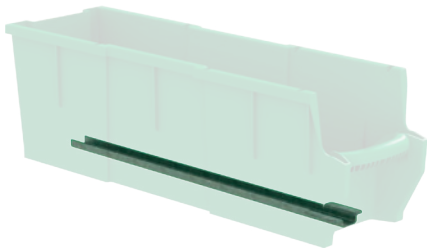
Transparent lid for plastic bins

Depth	Width	Fits	Kg	Part.No	€
300	150	3050	0,2	3060	5,20
300	240	3052	0,2	3062	8,30
470	150	3055	0,2	3065	8,75
470	240	3057	0,4	3067	13,00



Dividers for plastic bins

Width	Height	Fits	Part.No	€
140	154	3050, 55	3070	2,40
230	154	3052, 57	3072	2,70



Bracket for dropfront shelves

Depth	Kg	Part.No	€
300	0,1	3081	4,60
470	0,2	3082	5,20

No need for a front to your dropfront shelf when your bins snap into this bracket.

Fitting guide

Shelf width	Shelves		Dropfront shelves with front		Dropfront shelves without front	
	145 mm	235 mm	145 mm	235 mm	145 mm	235 mm
302 mm	2					
392 mm	1	1				
605 mm	4		2	1	4	
694 mm	3	1				
784 mm	2	2		3	2	2
907 mm	6		4	1	6	
997 mm	5	1	6		5	1
1086 mm	4	2				
1176 mm	3	3	4	2	3	3
1210 mm		5				
1299 mm	7	1				
1389 mm	6	2				
1512 mm	10					
1568 mm	4	4				
1960 mm	5	5				





5204



Rubber mat to shelves

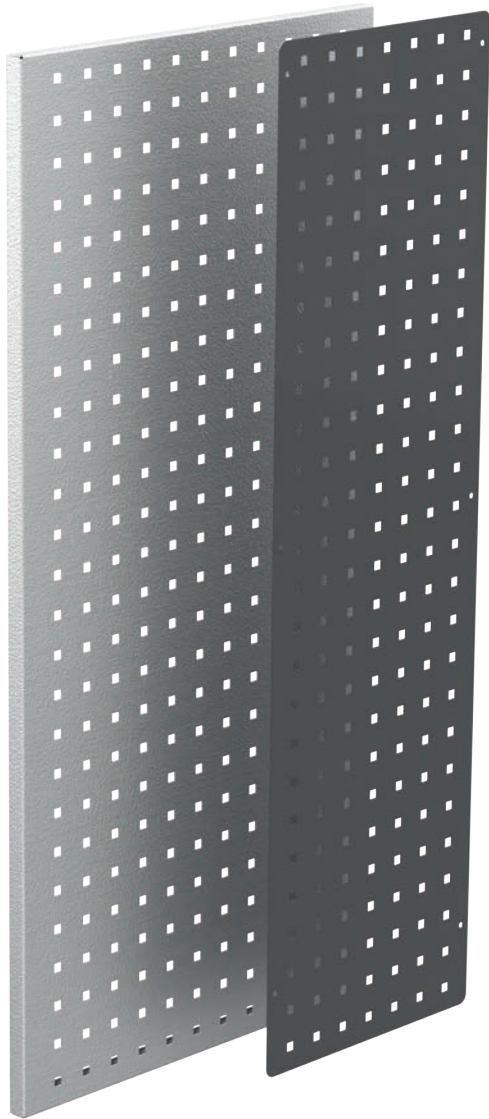
Depth	Width	Kg	Part.No	€
1400	*	5,6	5204	79,10
156	*	0,2	6599	7,65
156	780	0,2	6800	4,00
156	992	0,3	6802	5,45
156	1172	0,3	6804	6,30
156	1384	0,4	6805	7,20
156	1564	0,4	6806	8,15
156	2125	0,5	6803	15,44
156	3500	0,9	6807	25,73
298	298	0,1	6600	2,20
298	388	0,2	6602	2,20
298	600	0,3	6604	3,55
298	690	0,3	6606	3,85
298	780	0,4	6608	4,10
298	902	0,4	6610	5,20
298	992	0,4	6612	5,45
298	1082	0,4	6614	5,70
298	1172	0,5	6616	6,30
298	1204	0,5	6618	6,45
298	1295	0,6	6620	6,55
298	1384	0,6	6622	7,05
298	1506	0,6	6624	7,65
298	1564	0,6	6626	8,15
298	1956	0,8	6632	10,10
298	3500	1,5	6640	27,48
298	*	0,4	6699	8,15
404	600	0,3	6554	7,50
404	780	0,4	6558	10,00
404	992	0,5	6562	12,50
404	1172	0,6	6566	15,00
404	*	0,5	6399	13,00
468	298	0,2	6700	3,00
468	388	0,3	6702	3,85
468	598	0,4	6704	7,05
468	690	0,5	6706	7,65
468	780	0,6	6708	7,90
468	902	0,7	6710	8,40
468	992	0,7	6712	8,75
468	1082	0,8	6714	9,50
468	1172	0,8	6716	10,10
468	1204	0,8	6718	10,60
468	1294	0,9	6720	11,20
468	1384	0,9	6722	11,95
468	1506	1,0	6724	12,55
468	1564	1,1	6726	13,05
468	1956	1,6	6730	25,68
468	*	0,8	6799	13,60

Our rubber mat is 1 mm thick and has a plain surface.
Our floor mat (no. 5204) is ribbed.

* - Sold by running meter. (Full roll is 10 meters)

Rubber mat for sliding shelves

Fits in	Kg	Part.No	€
1881 & 1897	0,3	6808	6,55
1882 & 1898	0,4	6812	11,45
1883 & 1899	0,4	6816	11,95
1884, 1885 & 1894	0,4	6908	6,80
1886, 1887, 1888 & 1895	0,6	6912	11,70
1889, 1890, 1891 & 1896	0,7	6916	12,25



Pegboards plain sheet

Depth	Thickness	Height	Kg	Part.No	€
300	0,7	505	0,8	2100	22,90
300	0,7	670	1,0	2102	37,25
300	0,7	890	1,4	2104	41,60
300	0,7	1000	1,5	2106	55,10
300	0,7	1220	1,9	2108	57,20
300	0,7	1440	2,2	2110	73,85
470	0,9	505	1,5	2120	32,25
470	0,9	670	2,0	2122	47,85
470	0,9	825	2,5	2123	49,90
470	0,9	890	2,7	2124	50,95
470	0,9	1000	3,0	2126	58,25
470	0,9	1220	3,7	2128	68,65
470	0,9	1440	4,4	2130	85,60

All of our pegboards are made with square holes, 10x10 mm and 37 mm ^{c/}c

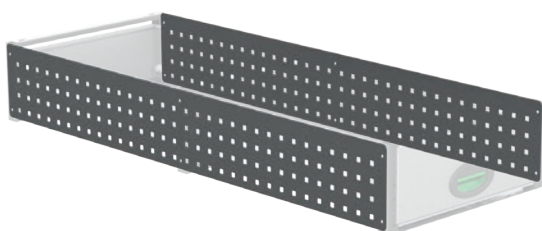
Pegboards flanged edge

Depth	Thickness	Height	Kg	Part.No	€
150	20	1000	1,6	2178	46,80
300	20	890	2,4	2150	61,15
300	20	1000	2,7	2152	66,55
300	20	1220	3,3	2154	74,45
392	20	890	3,0	2155	67,95
470	20	890	3,6	2156	82,05
470	20	1000	4,0	2158	88,40
470	20	1220	4,8	2160	96,70
500	20	1500	6,1	2162	110,10
700	20	900	5,2	2164	93,75
700	20	1250	6,7	2166	101,90
700	20	1480	8,3	2168	133,70



Pegboards for shelf frame extensions

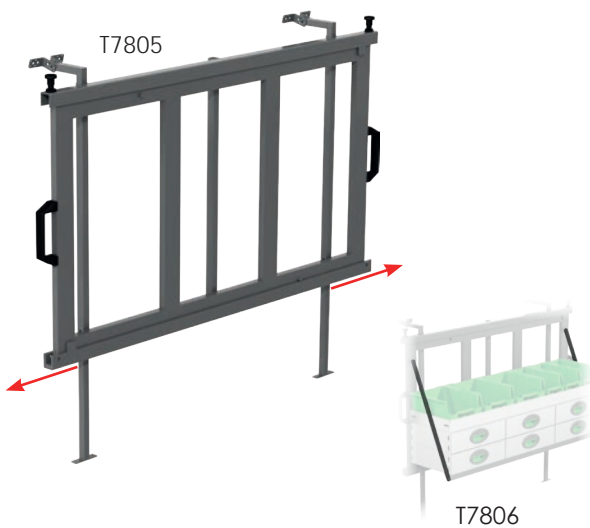
Depth	Thickness	Height	Fits	Kg	Part.No	€
300	0,7	185	2050	0,3	2190	13,30
300	0,7	230	2052	0,3	2191	14,05
300	0,7	290	2054	0,3	2192	15,40
300	0,7	400	2056	0,5	2193	18,20
470	0,9	185	2058	0,5	2195	16,65
470	0,9	230	2060	0,6	2196	18,20
470	0,9	290	2062	0,7	2197	18,70
470	0,9	400	2064	1,0	2198	22,35



Pegboard to sliding shelves

Width	Thickness	Height	Kg	Part.No	€
826	0,9	360	1,9	2185	49,00
1035	0,9	360	2,4	2186	64,00
1218	0,9	360	2,8	2187	68,00

The pegboards come with a perforation in the middle, to 190 mm high shelf frames you cut the pegboard and you have to both sides.

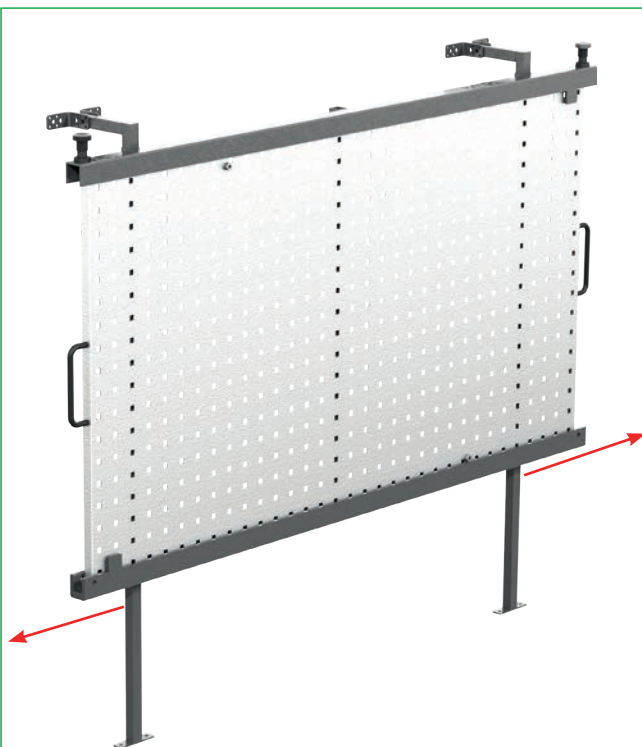


Sliding drawer & shelf frame

Depth	Width	Height	↔	Kg	Part.No	€
230	1250	700	65%	17,0	T7805	596,15

Total height is adjusted with the legs and the top brackets to fit your needs and space. Bracket T7806 is used to stabilize fitted interior, see picture above. The frame is extendible 2 ways. Payload 140 kg.

Kg	Part.No	€
0,5	T7806	17,45



Sliding pegboard

Depth	Width	Height	↔	Kg	Part.No	€
230	1250	700	65%	23,5	T7800	591,25
230	1480	700	65%	15,1	T7801	649,15
230	1220	470	65%	11,6	T7803	609,45

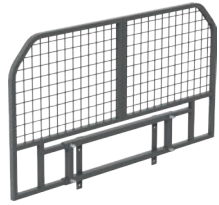
The sliding pegboard is extendable in both directions. Payload 125 kg. Total height is set with the legs and upper brackets to suit the vehicle and your needs.

Load carrier

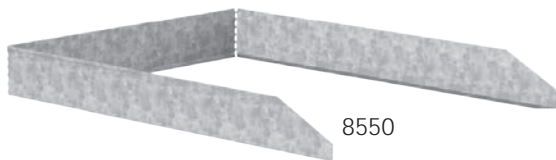


Depth	Width	Kg	Part.No	€
1500	950	34,6	T7709	901,80
Universal bulkhead		10,5	T8393	677,70

Payload 190 kg, uniformly distributed load.



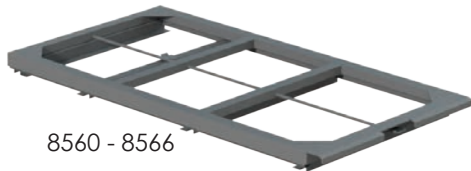
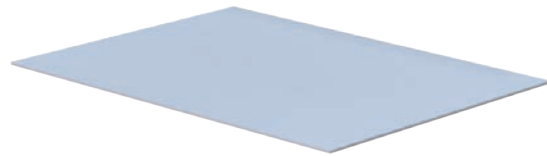
Adjustable frame



8550

Width		Length		Height	Kg	Part.No	€
Min	Max	Min	Max				
623	1234	950	1494	150	8,2	8550	141,60

Adjustable, in both width and depth, to fit any size of platform floor.



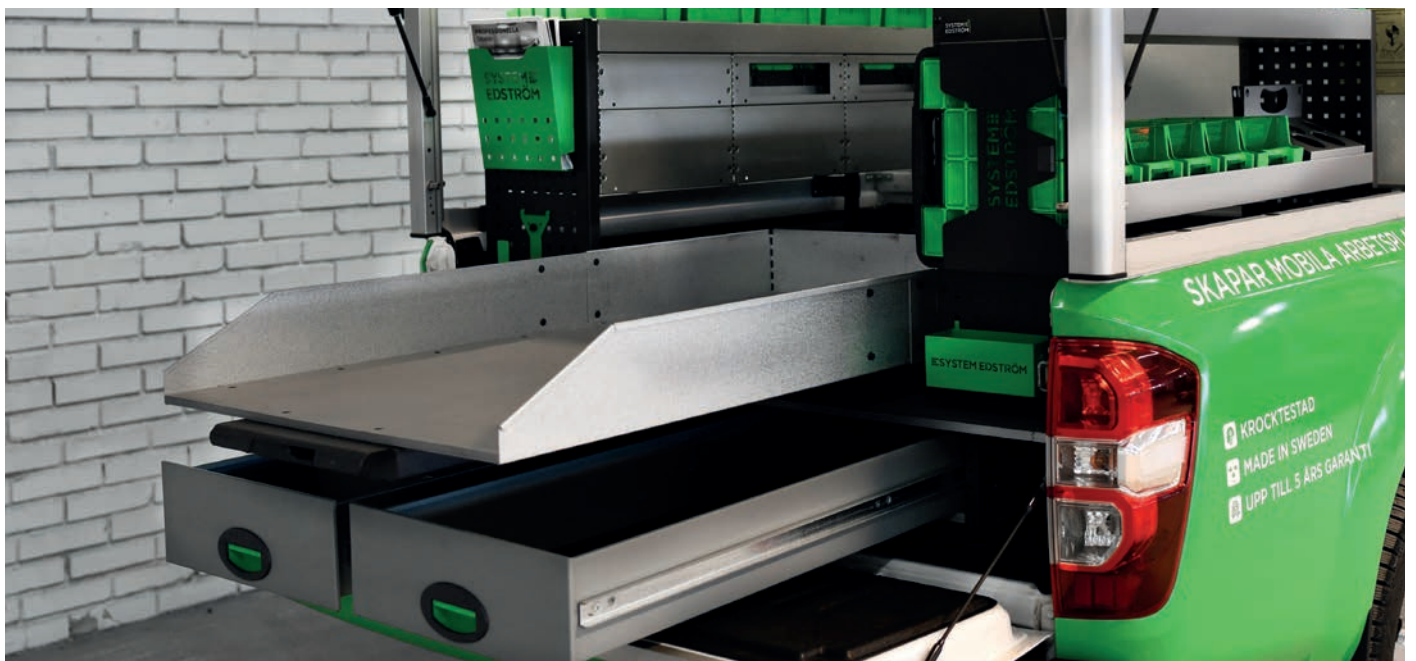
8560 - 8566

Sliding platform chassis

Width	Length	⇄	Height	Kg	Part.No	€
350	950	63%	75	15,5	8560	409,20
350	1300	68%	75	21,0	8561	464,10
350	1650	64%	75	26,0	8562	537,50
700	950	63%	75	20,9	8565	494,00
700	1300	68%	75	28,0	8563	519,00
700	1650	64%	75	35,0	8566	613,60

All platforms are extendable to two thirds of their length and the payload is 200 Kgs evenly distributed.

NOTE! The platforms is a chassi, you design your own application.





Wheel boxes

Depth	Width	Height	Kg	Part.No	€
300	998	330	12,0	2760	280,80
300	1176	330	13,5	2762	289,10
300	1210	330	13,6	2764	291,20
470	998	330	14,1	2766	296,40
470	1176	330	15,4	2768	304,70
470	1210	330	15,6	2770	306,80



Tool compartments

Depth	Width	Height	Kg	Part.No	€
1500	250	300	23,0	5034	239,10
1700	250	300	25,0	5035	258,70

Sturdy storage of spades, crowbars and more.



2782

2784

2780

Cabinets

Depth	Width	Height	Kg	Part.No	€
470	392	770	19,5	2780	485,70
300	302	1155	12,8	2782	349,20
470	392	1155	18,7	2784	379,60

Left or right hinged door, as required.

2782 comes with two hooks, 2784 comes with two hooks and a rod.



File box

Depth	Width	Height	Kg	Part.No	€
373	197	385	6,7	2920	183,40



Gas bottle cabinet

Depth	Width	Height	Kg	Part.No	€
470	392	605	18,5	2918	482,55

Our gas bottle cabinet with sealed door, includes brackets for either 1 or 2 bottles, a removable shelf and vent pipe. The door can be hinged on the left or the right side.



Tool case

Depth	Width	Height	Kg	Part.No	€
297	354	82	1,6	6302	55,75

The case comes with a mix of inserts. Additional inserts can be purchased separately.

Case inserts

Depth	Width	Height	Part.No	€
40	77	68	6317	1,10
81	77	68	6318	1,85
163	77	68	6319	2,50

Will also fit pegboard tray 4360 and 4362, page 22.



Tool case compartment

Depth	Width	Height	⇒	Kg	Part.No	€
300	392	110	100%	2,5	6300	119,30

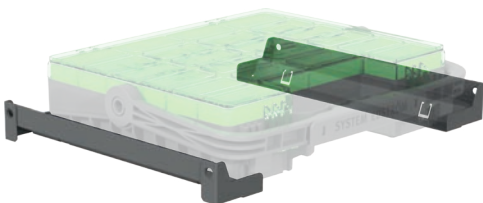
With the tool case compartment you can fit a case in a stack of drawers.

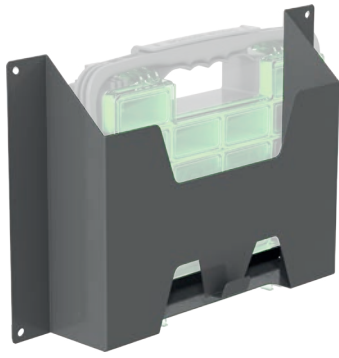


Tool case bracket

Depth	Kg	Part.No	€
300	0,5	6305	35,10
470	0,7	6306	36,45

The Edstrom portable tool case can be housed directly onto the frame on 2 brackets.

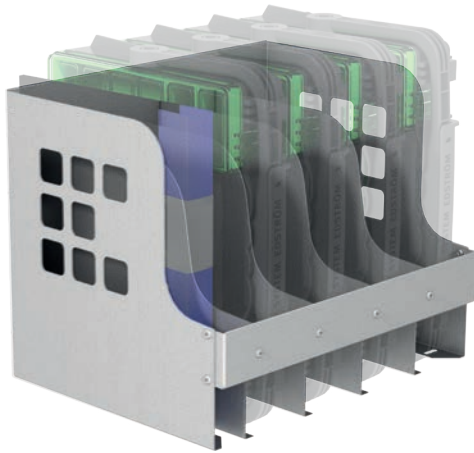




Tool case holder

Depth	Width	Height	Kg	Part.No	€
86	565	295	1,4	6307	56,00

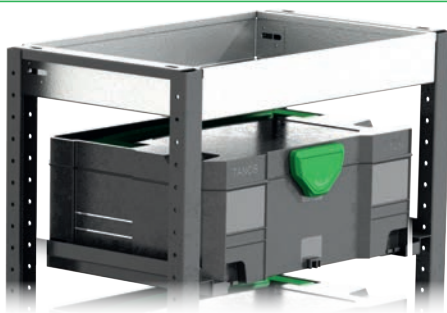
This bracket is mainly designed to fit on to our shelf frames, you can rotate the holder to fit on racking with both 300 and 470 mm depths.



Tool case/File holder

Depth	Width	Height	Kg	Part.No	€
304	383	299	4,4	6308	101,35

Up to four cases and a binder can be stored in the holder. Should be placed in a shelf.



1686

2305

Special shelf

Depth	Width	Height	Kg	Part.No	€
300	446	65	1,9	1686	53,55
300	-	-	0,4	2305	29,10
470	-	-	1,6	2310	35,60

A shelf length adapted to match Festool cases on bracket 2305. A perfect rack for the popular cases of Systainer type. NOTE! We only supply the shelf so you can store your own cases. Similar cases that are 396 x 296 mm (WxD) will also fit.



2310



We know mobile w



how to create workplaces.





Vice

Depth	Width	Height	Kg	Part.No	€
360	135	140	10,3	5004	377,15

The forged vice is complete with pipe jaw and turning plate.
Max opening 140 mm.



Vice Holders

Depth	Width	Height	⇒	Kg	Part.No	€
1110	210	195	600 mm	9,4	5012	231,75
1110	210	80	600 mm	8,9	5013	226,90

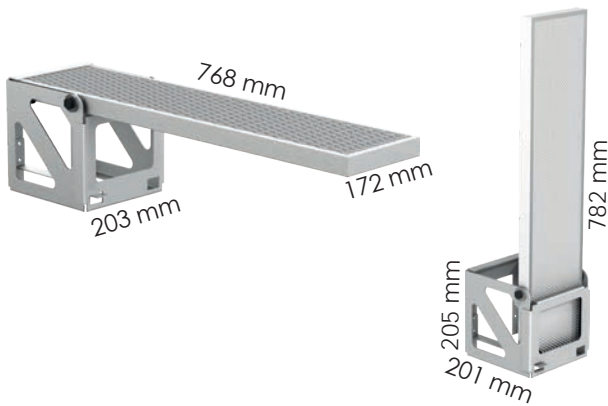
Plate measurement 180x210 mm. Cover 2950 is included (see below).



Extendable Vice Holder/Bench

Width	Height	⇒	Goes with	Kg	Part.No	€
1200	151	750 mm	997 mm	12,4	2720	197,30
1400	151	900 mm	1176 mm	14,3	2721	202,70

Fits both 300 and 470 mm deep shelf frames, can be turned for mounting on both right and left sides.



Foldable Vice Holder/Bench

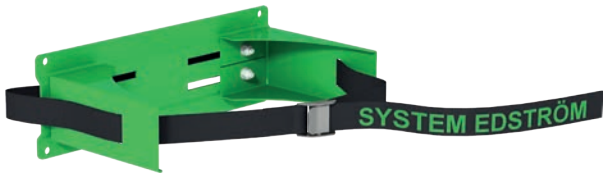
Kg	Part.No	€
6,0	2724	282,30



Accessories to Vice Holders

Description	Kg	Part.No	€
Cover, included in 5012 & 5013	1,1	2950	12,80
Adjustable support, 520 - 800 mm	1,9	2952	77,50

Adjustable support (2952) fits 2724, 5012 and 5013.
Spacer (5027) is useful when you need to get over treshold.



Gas bottle holder adjustable

Depth	Width	Height	Tube Ø	Kg	Part.No	€
150	300	97	< 300	0,9	2910	78,55

Liquefied petroleum gas P6 (bottles with 320 mm Ø can be stored after modification).



Gas bottle holder single

Depth	Width	Height	Tube Ø	Kg	Part.No	€
70	300	200	< 300	0,8	2912	41,00

Liquefied petroleum gas P6, could also be used for storing refrigerant bottles.



Gas bottle holder double

Depth	Width	Height	Tube Ø	Kg	Part.No	€
95	300	200	145	1,3	2913	47,00

5 kg Acetylene & Oxygene tubes.



Gas bottle holder shelf

Depth	Width	Height	Kg	Part.No	€
300	306	500	6,3	2914	161,65

Liquefied petroleum gas P11 or 5 kg Acetylene & Oxygene. Bracket for two bottles is included.



Gas bottle holder wallmounted

Depth	Width	Height	Tub Ø	Kg	Part.No	€
300	450	820	205	5,8	2916	194,60

Acetylene & Oxygene (AGA A21 & O20 or equivalent).



Case support

Depth	Length	Height	Kg	Part.No	€
220	1568	195	2,0	2935	109,20
-	-	-	0,6	2936	63,10

Adjustable bracket ideal for fixing between shelf frames to secure tool cases, for example. Comes in 1568 mm length, can be cut to fit your configuration. Add an extra bracket (2936) for maximum flexibility, one is included.



Hose/Cable rack

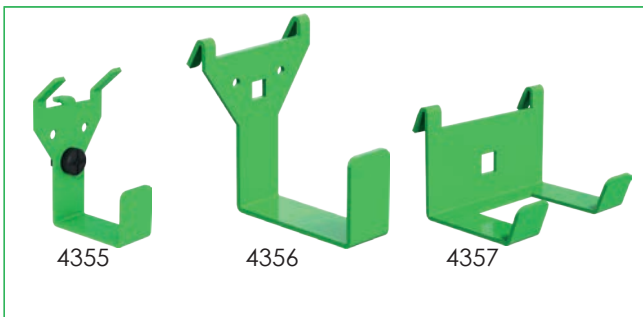
Depth	Width	Height	Kg	Part.No	€
79	267	168	0,5	4077	26,95
135	110	85	0,3	4080	25,00



Tube/Can holder

Depth	Width	Height	Kg	Part.No	€
66	194	123	0,4	4349	24,95
301	300	212	1,9	4350	65,80

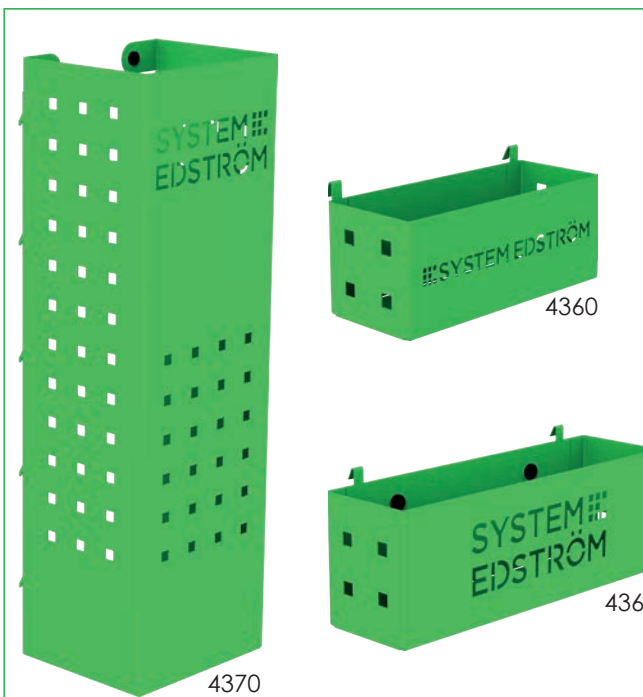
4350 should be placed in a shelf or separate it in two halves and mount them on a pegboard.



Universal hook

Depth	Width	Height		Kg	Part.No	€
50	50	88	(2)	0,1	4355	17,50
85	80	100		0,2	4356	11,45
61	83	55		0,1	4357	9,90

Simplicity at its best, heavy duty hooks, to be mount on a pegboard or hang it on the edge of a shelf. Secure the hook in a pegboard with a lock (page 33).





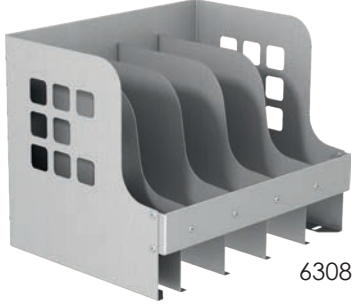
Pegboard tray

Depth	Width	Height	Kg	Part.No	€
82	200	80	0,5	4360	26,10
82	285	102	0,8	4362	31,55
122	455	122	1,5	4364	42,45
153	179	575	3,0	4370	65,20

A number of different trays that solve (almost) all storage problems. Our tool case inserts, page 16, fits in 4360 and 4362, ideal for your small items that lack storage space.

File holders








Depth	Width	Height	Kg	Part.No	€
21/31	65	79	0,1	4359	8,15
34/69	231	210	0,6	4368	26,10
304	383	299	4,4	6308	101,35

Not everything is digital, here you have storage for binders, brochures, etc. In 6308 you can store a mix of our tool case, page 16, and binders, should be placed on a shelf. 4359 is suitable for your business cards.


Clothes hook

Depth	Width	Height	Kg	Part.No	€
31	295	40	0,3	2706	11,20
31	465	40	0,5	2708	15,80

We call it a clothes hook but, needless to say, you can use it to hang up whatever you want on it.

Work bench



Depth	Width	Thickness	Kg	Part.No	€
500	900	30	9,2	6035	144,55
500	1300	30	13,4	6036	202,80
500	1700	30	16,5	6037	260,00
500	2100	30	20,5	6038	322,40
500	3000	30	30,5	6039	447,20





Board hook

Length	Ø	Part.No	€
38	5	4301	15,25
100	5	4302	17,40

Sold in a set of 5 pieces.



Twin hook

Length	Ø	Width	Part.No	€
38	5	11	4303	17,40
55	5	25	4304	17,40
100	5	25	4322	23,65

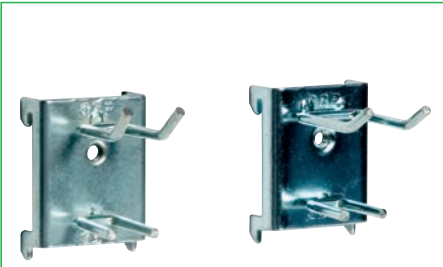
Sold in a set of 5 pieces.



Board hook

Length	Ø	Part.No	€
57	6	4305	18,75

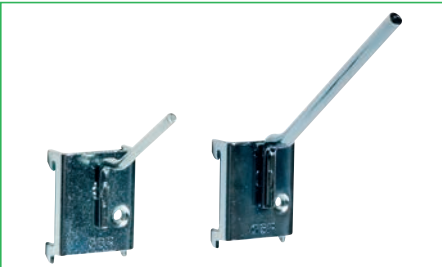
Sold in a set of 5 pieces.



Joint spanner hook

Length	Ø	Width	Part.No	€
28	3	10/9	4306	20,95
33	3	17/9	4307	21,50

Sold in a set of 5 pieces.



Angled hook

Length	Ø	Part.No	€
50	4	4308	14,15
100	6	4309	19,30

Sold in a set of 5 pieces.



Round hook

Ø	Part.No	€
60	4310	26,95
80	4311	30,15

Sold in a set of 5 pieces.



Loop hook

Open.	Ø	Part.No	€
23/44	5	4312	21,50

Sold in a set of 5 pieces.



Universal bracket

Height	Width	Part.No	€
40	34	4313	12,25

Sold in a set of 5 pieces.



Ring hook

Ø	Part.No	€
60	4314	43,20
80	4315	44,90

Sold in a set of 5 pieces.



Terry clip

Ø	Part.No	€
12	4316	19,30
18	4317	20,40
25	4318	20,40

Sold in a set of 5 pieces.



Rubber clip

Ø	Part.No	€
25	4325	47,85
38	4326	51,40

Sold in a set of 5 pieces.



Document clip

Width	Part.No	€
60	4330	45,65

Sold in a set of 5 pieces.



Spray can holder

Ø	Height	Part.No	€
80	113	4351	16,10

Sold separately.



Can holder, plastic

Ø	Height	Part.No	€
58-70	190	4358	18,75

Sold separately.



Clamping rack

Length	Height	Loops	Part.No	€
440	28	20	4354	40,55

Sold separately.



Tool holder

Length	Height	Depth	Part.No	€
285	150	81	4375	25,00

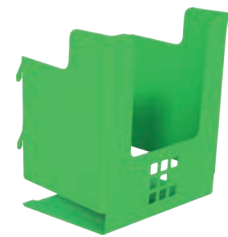
Sold separately.



Power tool holder

Length	Height	Depth	Part.No	€
80	140	72	4380	20,00

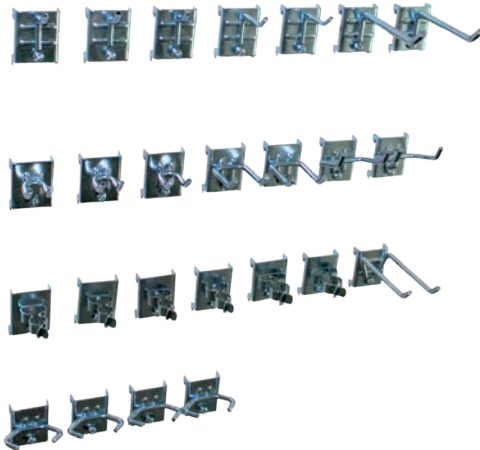
Sold separately.



Battery holder

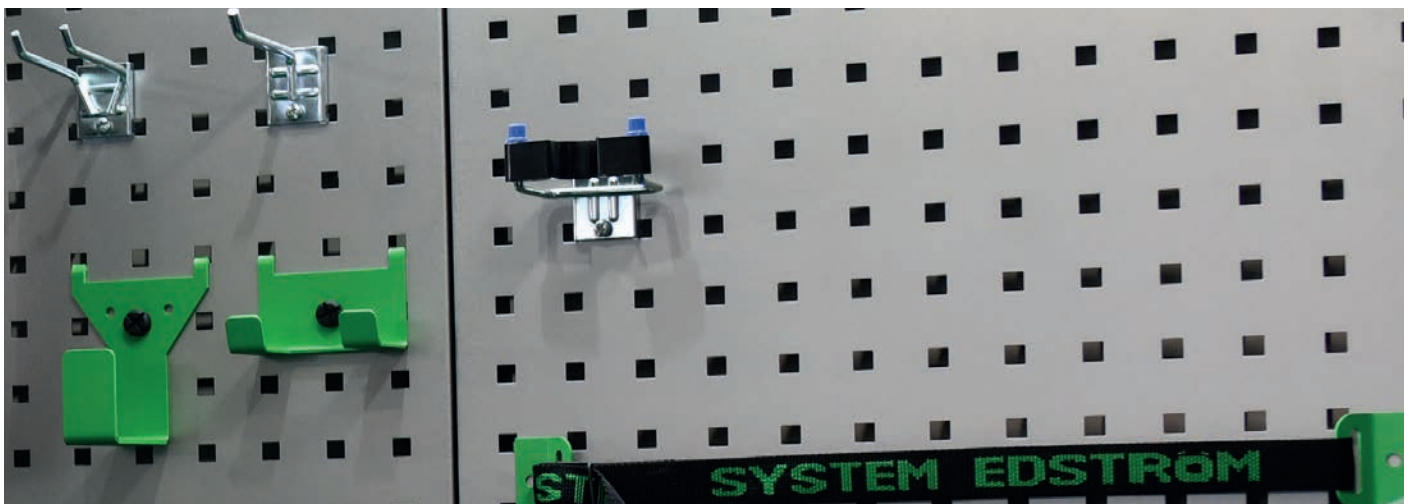
Length	Height	Depth	Part.No	€
91	103	63	4381	17,50

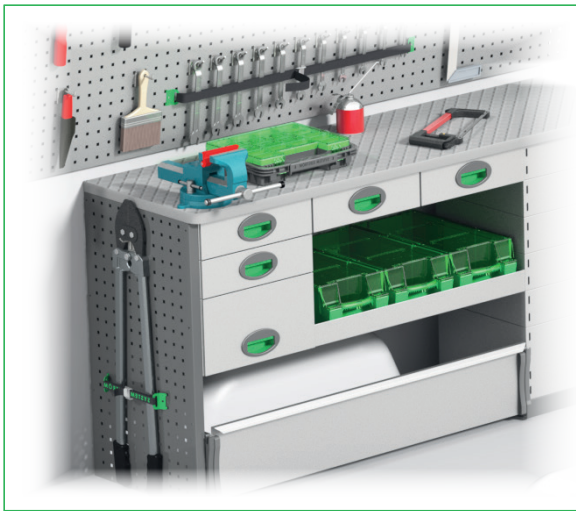
Sold separately.



Tool holder kit

Parts	Part.No	€
25	4319	71,20





Strap with brackets

Information	Width	Part.No	€
1200 mm, nylon strap	25	4365	20,70
1000 mm, elastic strap	25	4366	22,30

The brackets will fit on our pegboards.



Nylon strap

Length	Width	Part.No	€
4000	30	5107	16,65

2-part with tensioner.

Nylon strap

Length	Width	Part.No	€
2520	25	5117	11,70

2-part with hooks.

Nylon strap

Length	Width	Part.No	€
2500	25	5118	10,35

Fire extinguisher

Information	Part.No	€
2 kg, powder	5055	115,75
4 kg, powder	5056	223,65
6 kg, powder	5057	222,55

Wall bracket is included.

Rubber strap

Length	Part.No	€
-	5121	1,10
285	5122	3,30
By the meter Whole package 10 meter.	5124	7,80
285	5125	4,95

Lashing ring

Part.No	€
5097	11,20

Lashing ring

Part.No	€
5098	8,75

Lashing ring

Part.No	€
5099	9,85



Water can

Information	Part.No	€
Bracket	2970	31,25
Water can with tap, 5 litres	2972	14,15

The bracket can be mounted on a shelf frame or pegboard. Bracket and can sold separately.



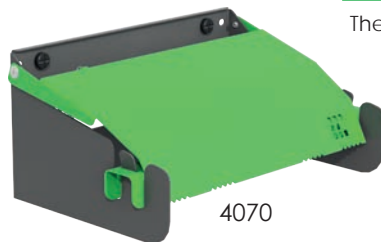
Grab handle

Depth	Width	Height	Ø	Part.No	€
77	30	275	27	4390	26,00

The handled is mounted on a shelf frame or directly in your vehicles chassis.



5084



4070

Paper dispenser

Information	Part.No	€
Dispenser DxWxH 205x319x141 mm	4070	49,00
Magnetic bracket to 5084	5083	19,75
Dispenser with paper	5084	75,05
Paper to 5084	5086	8,15

The magnetic brackets allows you to bring the holder with you.



First aid

Information	Part.No	€
First aid board	5080	95,70
First aid kit	5082	48,40



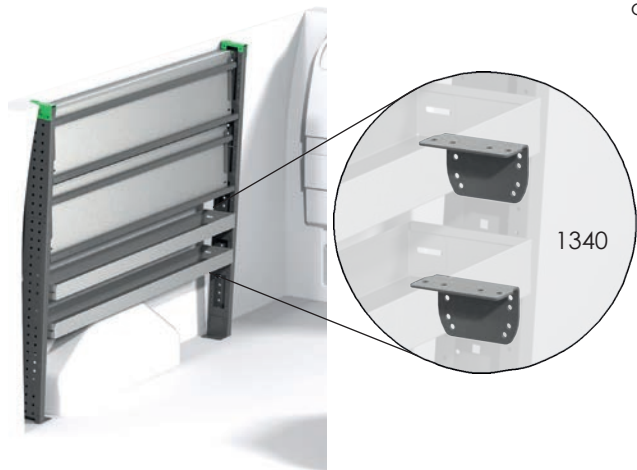
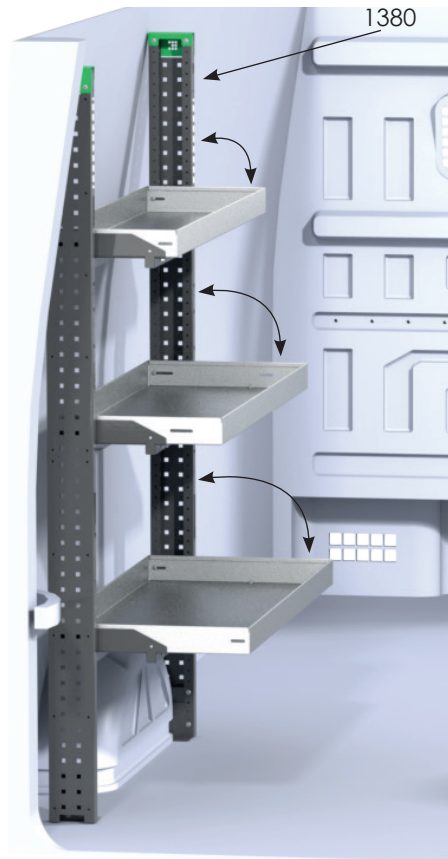
Basket

Depth	Width	Height	Part.No	€
235	305	350	5079	26,35



Edstrom colours

Information	Part.No	€
Dark grey, spray can	9007	38,10
Light grey, spray can	9014	38,10
Edström green, spray can	9015	38,10



Flexi shelf frame

Depth	Width	Height	Info.	Kg	Part.No	€
112	32	1788	2/set	11,8	1380	240,25
112	31	1788	1/set	4,9	1382	96,75

Flexi shelf support

Depth	Width	Height	Shelf width	Kg	Part.No	€
275	830	83	784	3,1	1308	146,65
275	1043	83	997	3,5	1312	156,00
275	1222	83	1176	3,9	1316	172,65
275	1435	83	1389	4,4	1322	176,80
275	1614	83	1568	4,8	1326	189,30

Flexi shelf bracket

Info.	Kg	Part.No	€
160 mm deep shelves, 2/set	0,6	1340	18,50

Flexi gas damper

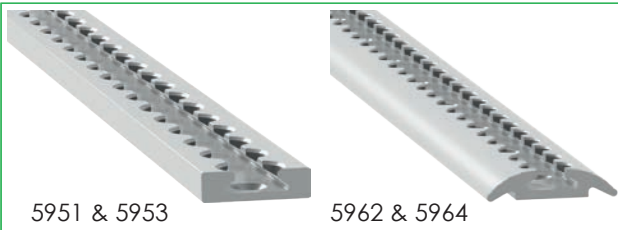
Info.	Kg	Part.No	€
2/set	0,1	1386	78,00

The shelf frames can be cut to fit your configuration. Loading capacity increases to 100 kg per shelf when mounted in a Flexirack. Shelves are adjustable to 4 pre-set angle on installation of 0, 4, 8 & 12 degrees.

Choose your shelves , 300, 400 and/or 470 mm depth. Our dropfront shelves will also fit, 300 and 470 mm depth. A shelf bracket will fit all different shelf depths.

Use the shelf bracket if you want to combine 160 mm deep shelves with other depths. 160 mm shelves are fixed, not foldable.





5951 & 5953

5962 & 5964

Airline tracks

Length	Kg	Part.No	€
295	0,2	5951	17,50
465	0,3	5953	22,50
1000	0,8	5962	34,00
1500	1,2	5964	49,00



5900



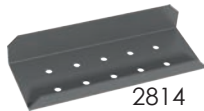
5901

Airline lashing rings

Information	Kg	Part.No	€
Round aluminium	0,1	5900	4,75
Straight black plastic	0,1	5901	6,50



2813



2814



5910



5911

Airline brackets

Information	Kg	Part.No	€
Angle bracket 53x80x112 mm	0,2	2813	6,50
Support plinth bracket 175x66x15/32 mm	0,3	2814	8,25
T-nut 2xM6	-	5910	6,00
T-nut 3xM6	-	5911	6,50
Mounting bolt M8x25	-	5913	8,00
Clamp fitting	0,3	5915	8,75



5913



5915



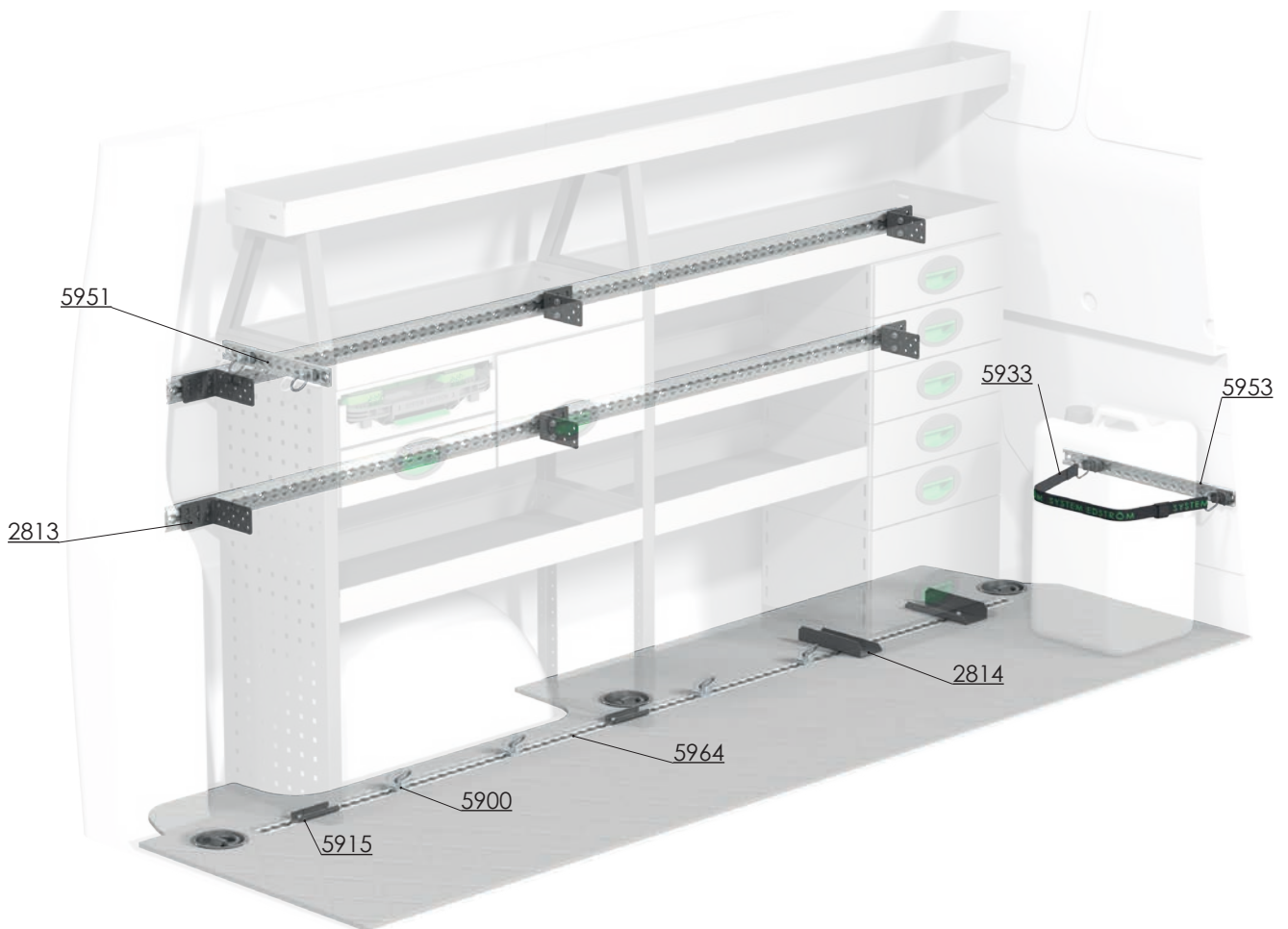
5931 - 5935



5940

Airline straps

Length	Kg	Part.No	€
200/ 700	0,1	5931	18,00
200/1200	0,1	5933	19,00
200/2200	0,2	5935	20,00
500/2500 With tensiometer	0,3	5940	30,00





LED lighting

Description	Length	Watt	Part.No	€
12/24V, 30 diodes	500	7,2	5815	94,35
Lighting kit with 2 tubes		14,4	F8320	192,20
Lighting kit with 3 tubes		21,6	F8321	246,05
Lighting kit with 4 tubes		28,8	F8322	299,85
Lighting kit with 5 tubes		36,0	F8323	354,80
Lighting kit with 6 tubes		43,2	F8324	409,80

The set consists of tube 5067, cable, fuse and two rocker switches.



Pure sine wave inverter

Depth	Width	Height	Watt	Kg	Part.No	€
210	106	60	400	0,8	5430	263,00
320	170	80	1200	3,8	5431	1 137,90
450	166	88	2000	4,9	5432	1 332,45

Protected;

- Short circuit
- High temperature
- Overvoltage
- Undervoltage
- Overload
- Incorrect input polarity

We work with those who understand. This inverter series is designed together with Awimex to ensure trouble-free power supply.



Tube pipe tube

Length	Width	Height	Kg	Part.No	€
3050	125	125	14,0	8467	599,00

Our proven pipe carrier with a load retrieval device inside the tube which gives easy access to your pipes.




Internal ladder holder

Length	Kg	Part.No	€
2400	3,9	T8900	227,45

Store your ladder on the inside of the roof, pull it back to the rear door in a simple operation. The aluminum rail comes in two parts with a joining piece.






Brackets

Depth	Height	Kg	Part.No	€
160		0,3	1840	17,70
300		0,5	1842	19,30
	260-410 mm	0,9	1844	29,40
	235-410 mm	0,6	2830	27,20

1840 & 1842 1844 2830




Mounting brackets

Length	Measurement	Kg	Part.No	€
200	26 x 54	0,3	2081	10,85
295	50 x 30	0,3	2810	6,75
460	50 x 30	0,5	2812	7,05
2000 (5 pcs)	50 x 30	12,3	2816	130,00
1568	50 x 30	2,0	2817	21,50
1200		0,9	7388	15,85

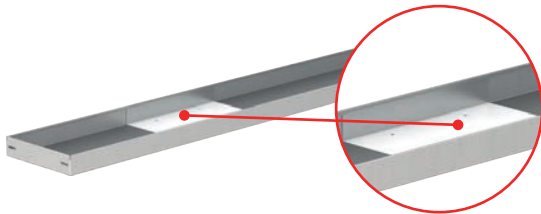
2081 is designed to use with our shelf frames, one example is to join two frames on top of each other.
7388 is a pole with the same profile as our shelf frames.

2081 2816 & 2817 2812 2810 7388



Flipfront

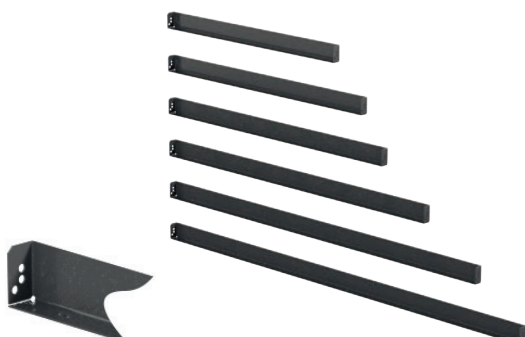
Depth	Kg	Part.No	€
160	0,3	1831	30,75
300	0,5	1833	35,60



Shelf joint


Depth	Kg	Part.No	€
300	1,3	1834	22,05

Should you require a shelf width not included within our standard range then you may utilise the shelf joint to shorten a shelf or connect two shelves to a desired width. (Only 300 mm deep shelves)



L-type support rail








Length	Measurement	Kg	Part.No	€
784	50 x 30	1,1	2820	21,50
907	50 x 30	1,2	2822	23,90
997	50 x 30	1,4	2824	24,50
1176	50 x 30	1,6	2826	26,35
1389	50 x 30	1,6	2828	30,75
1568	50 x 30	1,7	2829	33,20





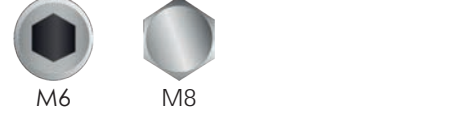











Cross brace



Kg	Part.No	€
0,8	2850	27,45

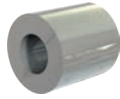
The brace is suitable for all sizes of sliding shelves and shelf frames above 505mm. It can also be used in conjunction with our standard shelves up to 1176mm in length.

		Angle brackets			
		Width	Measurement	Part.No	€
	2809	53	58 x 58	2801	2,75
	2811	53	58 x 112	2803	4,10
	2801	53	58 x 154	2805	5,45
	2803	53	58 x 209	2807	7,65
	2805	53	58 x 264	2808	8,15
	2807	53	80:87:80	2809	9,25
	2808	53	58:64:58	2811	8,15

		Installation kits			
		Information	Parts	Part.No	€
		Mixed parts, size 1	146	5501	41,05
		Mixed parts, size 2	238	5502	58,45
		For Flexi system		5509	16,15
		For vice and vice holder	57	5510	15,80
		False floor installation kit	93	T5310	64,70

		Nuts & Bolts					
		Ø	Length	Pack	€ / pack	Part.No	€
	M6	M6	10	2800	700	5600	0,31
	M8	M6	12	1000	250	5611	0,31
	5600	M6	16	500	225	5612	0,57
	5620	M6	20	500	225	5614	0,57
	5640	M6	25	500	225	5616	0,57
	5642	M6	30	500	225	5618	0,57
	5640	M6	35	500	225	5620	0,57
	5642	M6	50	100	55	5624	0,78
	7172	M6	Nut	1000	250	5640	0,31
		M6	Washer Ø 22	200	50	5642	0,31
		M6	Tee nut			7172	0,50
		M8	16			7113	0,21
		M8	20			7114	0,21
		M8	30			7115	0,32
		M8	35			7116	0,32
		M8	40			7117	0,32
		M8	50			7118	0,32
		M8	60			7119	0,47
		M8	Nut			7122	0,21
		M8	Washer Ø 28			7123	0,32
		M8	Tee nut			7173	0,60

		Blind Rivet					
		Ø	Length	Pack	€ / pack	Part.No	€
	5662	4,8	10	Steel		5670	0,62
	5672	4,8	10	Alu	500	100	0,26
		4,8	14	Steel		5650	0,57
		4,8	21	Steel		5652	0,47
		4,8	30	Steel		5654	0,62
		6,4	15	Steel	1500	300	0,26
		6,4	18	Steel	1500	375	0,36
		6,4	22	Steel	1000	250	0,36
		6,4	30	Steel	1000	400	0,57
		6,4	35	Steel	500	450	0,68
		6,4	40	Alu/Steel	1000	6 700	1,20



Distance tube for pegboards

Part.No	€
3031	1,10

Expander lock for pegboards

Part.No	€
5680	2,18



Content

Accessories to Vice Holders	20	Mounting brackets	31
Adjustable frame	14	Nuts & Bolts	32
Adjustable shelves with flipfront	8	Nylon strap	26
Airline System	29	Paper dispenser	27
Angle brackets	32	Pegboards	12
Angled hook	24	Pegboard tray	22
Basket	27	Plastic bin for shelves	10
Battery holder	25	Power tool holder	25
Blind Rivet	32	Pure sine wave inverter	30
Board hook	24	Ring hook	24
Bracket for dropfront shelves	10	Round hook	24
Brackets	31	Rubber clip	24
Cabinets	15	Rubber mat for sliding shelves	11
Can holder, plastic	25	Rubber mat to shelves	11
Case inserts	16	Rubber strap	26
Case support	22	Shelf dividers	8
Clamping rack	25	Shelf for cable reels	9
Clothes hook	23	Shelf frame extensions	4
Cross brace	31	Shelf frames	4
Distance tube for pegboards	33	Shelf frame support leg	4
Dividers for dropfront Shelves	9	Shelf joint	31
Dividers for plastic bins	10	Shelves	8
Dividers for sliding shelves	7	Sliding drawer & shelf frame	13
Document clip	24	Sliding pegboard	13
Drawer foam inserts	6	Sliding platform chassis	14
Drawer inserts	6	Sliding shelves	7
Drawers	5	Special shelf	17
Drop fronts	9	Spray can holder	25
Dropfront shelves	9	Strap with brackets	26
Edstrom colours	27	Support plinths	6
Expander lock for pegboards	33	Terry clip	24
Extendable Vice Holder/Bench	20	Tool case	16
File box	15	Tool case bracket	16
File holders	23	Tool case compartment	16
Fire extinguisher	26	Tool case/File holder	17
First aid	27	Tool case holder	17
Flexi System	28	Tool compartments	15
Flipfront	31	Tool holder	25
Foldable Vice Holder/Bench	20	Tool holder kit	25
Gas bottle cabinet	15	Top plates	6
Gas bottle holder	21	Transparant lid for plastic bins	10
Grab handle	27	Tube/Can holder	22
Hose/Cable rack	22	Tubo pipe tube	30
Installation kits	32	Twin hook	24
Internal ladder holder	30	Universal bracket	24
Joint spanner hook	24	Universal hook	22
Lashing ring	26	Vice	20
LED lighting	30	Vice Holders	20
Load carrier	14	Water can	27
Loop hook	24	Wheel boxes	15
L-type support rail	31	Work bench	23

INFORMATION



GENERALLY

System Edström Bilinredningar AB is certified according to SS-EN ISO 9001:2015 to secure the administrative quality and to give us the possibility to keep a high accuracy on deliveries.

All material used in System Edström can be recycled to 100%. We are also certified according to SS-EN ISO 14001:2015.



REMEMBER

Now that you have chosen to have System Edström in your vehicle you have taken the first and most important step to make your mobile workshop safe and functional. From here on it is up to you how safe and functional your working place will be.

Remember:

You as the driver has the full responsibility if you or any one else is injured if the cargo is poorly secured. It is also your responsibility to make sure that the interior is mounted in the safest way possible whatever your choice of workshop, even if they are professionals with knowhow and long experience.

Make sure NOT to exceed the maximum payload of the vehicle.



SECURITY

Our products are tested in two ways, the first and most important is two crashtests, one (ECE 17:07) performed by Milbrook in England and another one performed by Valutec in France (INRS NS286).

Learn more about us on our homepage, www.systemedstrom.com.





Up to 5 years warranty



Crash tested



Made in Sweden

SYSTEM EDSTRÖM

SYSTEM EDSTRÖM BILINREDNINGAR AB
Råseborgsgatan 11
164 74 Kista
Sweden

Order +46 (0)10 102 95 00
Sales +46 (0)10 102 95 01
Switchboard +46 (0)8 590 920 20
E-mail info@edstrom.se